



Engineering Library Progress

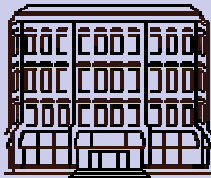
Autumn 2003

Volume 5, Issue 2

CHANGING STATES

INSIDE THIS ISSUE:

NEW Electronic Reference Books!	2
INSPEC Moves to Engineering Village 2	2
NEW Computers	2
Autumn Class Schedule	3
Orbis-Cascade Alliance & Summit	4
Department Liaisons	4



Autumn Quarter Hours:

Mon-Thurs	8:00 am-10:00 pm
Friday	8:00 am- 6:00 pm
Saturday	9:00 am- 5:00 pm
Sunday	1:00 pm-10:00 pm

Reference Hours:

Mon-Thurs	9:00 am-8:00 pm
Friday	9:00 am-5:00 pm
Saturday & Sunday	1:00 pm-5:00 pm

Contact Us:

Info: 206-543-0740
Circulation: 206-685-8324
Reference: 206-543-0741
Email: englib@u.washington.edu

<http://www.lib.washington.edu/engineering/>

Greetings,

As another school year unfolds, I've listed below a few items that will potentially impact your teaching, research and study. I'll get the bad news out of the way up front and then follow with all the positive info.

We **did** have to go through a journals cancellation project this year (many thanks to all of you who completed and returned our serial survey – your input impacted which titles were cancelled and which were saved). In identifying titles to cancel, we looked at what would allow us to maintain the greatest number of unique subscriptions while still reaching our required dollar target. That meant seeking higher-priced titles with relatively low use, as measured by both your survey responses and in our in-house usage data. Using those criteria, we ultimately canceled only eight subscriptions, all but one of which are priced between \$2000 and \$4000 for a 2004 subscription. They are:

Engineering Computations | *Industrial Robot* | *Integrated Manufacturing Systems* | *International Journal of Advanced Manufacturing Technology* | *International Journal of Fracture* | *Journal of Thermal Stresses* | *Kemikaru Enjiniyaringu (Chemical Engineering)* | *Water, Air, and Soil Pollution*.

We realize that no title we subscribe to receives no use, and that cancellation of these titles will negatively impact teaching and research for some of you. We invite you to use tables of contents services, such as Current Contents, and the Libraries' interlibrary borrowing service (now UWorld Express) as an acceptable substitute for in-house subscriptions to these titles.

And now for the good news...

- Long-requested subscriptions to online journal packages from SPIE and OSA have been placed. The OSA titles are already up and available electronically and the SPIE journals (**not** the proceedings) may be up by the time you read this.
- INSPEC has moved to Engineering Village 2. See page 2.
- ASM Handbooks and over 500 engineering reference books from Knovel are now available online. See page 2 for more information.
- The Orbis-Cascade Alliance (and the associated new Summit electronic catalog) doubles the number of books that you can check out and receive within five working days. See page 4.

As always, please contact us if you have questions, comments, or would like us to provide your class with instruction in the use of library resources.

Mel DeSart
Head, Engineering Library

ENGINEERING LIBRARY AUTUMN CLASS SCHEDULE

Library Tours

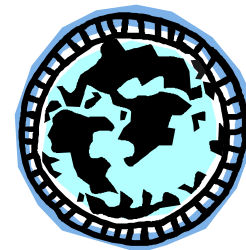
Take a look around the library and find out where things are. These short tours will be especially useful for those who are new to the UW campus or the College of Engineering:

Tuesday, Sept. 30
9:00-9:30 am

Wednesday, Oct. 1
12:30-1:00 pm

Tuesday, Oct. 7
12:30-1:00 pm

Wednesday, Oct. 8
9:00-9:30 am



Effective Database Searching Techniques

Learn how to construct effective search strategies to get the most out of Engineering databases such as Compendex, INSPEC, NTIS, TRIS, etc. The class will cover search techniques that can be used in a variety of Engineering databases.

Tuesday, Oct. 14
12:30 – 2:00 pm

Monday, Oct. 27
5:00 – 6:30 pm

Introduction to Engineering Databases

This one-hour session will go over the basic steps of doing a search for Engineering research literature-- from choosing a database, constructing a search, and finding the articles or papers (online or in print). Bring a topic to research.

Saturday, Oct. 18
12:00-1:00 pm

Saturday, Nov. 1
12:00-1:00 pm

Introduction to Patent Searching

This is an introduction to patent searching. Our patent expert will take you through the process step-by-step, showing how to search the USPTO's Patent Database (www.uspto.gov) using both print and electronic resources.

Monday, Oct. 20
2:00-4:00 pm

Monday, Nov. 17
12:30-2:30 pm

Searching for Standards

Lost in the maze of standards? Learn how to use the specialized Engineering Library and internet resources to identify, locate and obtain national, industry and international standards.

Tuesday, Nov. 18
12:30-1:00 pm

Searching Compendex on Engineering Village 2

Compendex is the most comprehensive index available for journal articles, technical reports, and conference papers on all engineering topics. Attend this half-hour session to get an overview of the database and find out how to set up email alerts and search INSPEC and Compendex simultaneously (and de-dupe the results!).

Monday, Oct. 13
5:30-6:00 pm

Tuesday, Oct. 28
12:30-1:00 pm

Searching IEEE Xplore (IEEE/IEE Electronic Library Online)

IEEE Xplore provides full-text access to IEEE transactions, journals, magazines and conference proceedings published since 1988 and all current IEEE Standards. Attend this session to get an overview of this online library, and find out how to make the most of the time you spend searching.

Thursday, Oct. 16
10:00-11:00 am

Rachel Berrington from IEEE
will be teaching this class!

Tuesday, Oct. 21
12:30-1:00 pm

Monday, Nov. 3
5:30-6:00 pm

Searching INSPEC on Engineering Village 2

INSPEC is the most comprehensive index available for journal articles and conference papers in the physical sciences, electrical engineering, and computer science. Attend this half-hour session to get an overview of the database and find out how to set up email alerts and search INSPEC and Compendex simultaneously (and de-dupe the results!).

Monday, Oct. 20
5:30-6:00 pm

Tuesday, Nov. 4
12:30-1:00 pm

All classes will be held in the Engineering Library Instruction Center (ELIC), on the 3rd floor of the Engineering Library, unless otherwise noted.

Register:

Register by email to lcwhang@u.washington.edu listing which class(es) you would like to attend with date(s) and time(s), or by calling 685-8370.



Engineering Library
Box 352170
University of Washington
Seattle, WA 98195-2170

Phone: 206-543-0740
Fax: 206-543-3305
Email: englib@u.washington.edu

WE'RE ON THE WEB!
WWW.LIB.WASHINGTON.EDU/
ENGINEERING/

Engineering Library Progress is produced quarterly
by Engineering Library staff.

Editor: Linda Whang
Contributors: Mel DeSart, Pam Mojfeld, Linda Whang

Engineering Library Progress is available online at
<http://www.lib.washington.edu/engineering/elp/>

ENGINEERING DEPARTMENT LIAISONS

Christina Byrne cbyrne@u. 685-8371
Bioengineering

Julie Cook julesck@u. 685-8367
Civil & Environmental Engineering

Mel DeSart desart@u. 685-8369
Aeronautics & Astronautics ■ Industrial
Engineering ■ Mechanical Engineering

Susanne Redalje curie@u. 543-1604
Materials Science and Engineering

Linda Whang lcwhang@u. 685-8370
Computer Science and Engineering ■
Electrical Engineering ■ Technical Com-
munication

**Contact the library
liaison for your department
for purchasing suggestions
or class specific instruction**

ORBIS-CASCADE ALLIANCE & SUMMIT

The Orbis-Cascade Alliance, a consortium of 26 academic libraries in Oregon and Washington (including the UW), recently unveiled Summit, their new online catalog. By searching Summit, you can search the library holdings of all 26 libraries simultaneously, and what's more, your UW borrowing privileges extend to *all* Orbis-Cascade member libraries! This *doubles* the number of library materials available to UW faculty, staff, and students.

If an item is not available at a UW library (not owned, checked out, or on reserve), then try searching Summit to see if it is available at an Orbis-Cascade library. If a copy is available, you can request it directly from the Summit catalog, or go to that library and check out the item in person.

How to access Summit:

Summit is available at <http://summit.orbiscascade.org/>, or click on the "Summit" button from the UW Libraries Catalog (<http://catalog.lib.washington.edu/search~>).

How to search Summit:

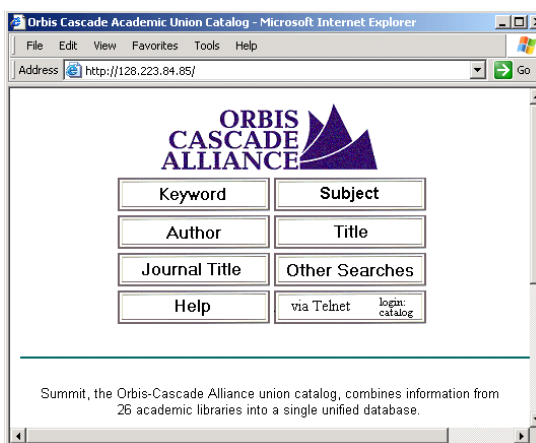
Just like in the UW Libraries Catalog, you can search by author, title, keywords, subject headings and other options. You can limit your search by publication year, type of material, language, library location and other ways. Summit is also linked to the UW Libraries Catalog. Once you've done a search in our catalog, just click on the "Search Summit" button to transfer your search to Summit.

How to request an item from Summit:

Once you have found an item in Summit, click on the "Request This Item" link. A window will appear for you to identify your institution, provide your name, ID number (barcode from the back of your Husky ID card), Library PIN*, and choose your pick-up location on campus. The item will be delivered to your preferred campus library in a few days.

Which items are not available through Summit?

Reference books, journals and journal articles, electronic resources, reserve materials, and some audio-visual materials are generally not available through Summit.



* If you don't have a Library PIN, you can set one up online at <http://catalog.lib.washington.edu/patroninfo>.