



# Engineering Library Progress

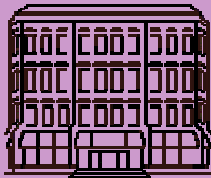
Winter 2004

Volume 6, Issue 1

## CHANGE

### INSIDE THIS ISSUE:

IEEE Enhancements	2
Journal Reorganization	2
Library Tip... Ulrich's Periodicals Directory	2
Winter Class Schedule	3
NEW Workstations!	4
Department Liaisons	4



### Winter Quarter Hours:

Mon-Thurs	8:00 am-10:00 pm
Friday	8:00 am- 6:00 pm
Saturday	9:00 am- 5:00 pm
Sunday	1:00 pm-10:00 pm

### Reference Hours:

Mon-Thurs	9:00 am-8:00 pm
Friday	9:00 am-5:00 pm
Saturday & Sunday	1:00 pm-5:00 pm

### Contact Us:

Info: 206-543-0740  
Circulation: 206-685-8324  
Reference: 206-543-0741  
Email: [englib@u.washington.edu](mailto:englib@u.washington.edu)

<http://www.lib.washington.edu/engineering/>

Change is as much a way of life for those of us in libraries as it is for engineering faculty and students. Consider the following:

- 30 years ago - virtually all library collections and use were paper-based.
- 20 years ago - most university libraries had some kind of electronic catalog of their holdings. A few resources (mostly databases) were available electronically, but almost all access was via the Internet, and only via library staff intermediation, not direct access by the end-user. The vast majority of resources were still paper-based.
- 10 years ago - electronic catalogs were widespread, many databases and some full-text resources were now available, but most were either CD-ROM-based or available on the Internet as Gopher files. Oh, and it was only a bit over *ten years ago* that some folks at the National Center for Supercomputing Applications at the University of Illinois opened the door to the World Wide Web by developing the first graphical Web browser, Mosaic.
- 5 years ago - many databases and full-text resources were available electronically, but with the content move from CD-ROM to the Web still in its infancy.
- Today - Web access to indexes and abstracts, journal content, and some reference works is the norm, other kinds of books have also made the transition to an e-format, and e-access to a world of material external to the Libraries is now available via the Web.

If we in the library world sometimes have trouble keeping up with all these changes (which we do), there's no doubt that for many of you trying to stay abreast of what's new and potentially useful to you and your students is nearly impossible.

For instance, did you realize that we're providing electronic access to all of the journals of nearly all the major engineering societies? How about e-access to *every* Elsevier, Academic Press, and Wiley journal we subscribe to as well as to dozens more we *don't* subscribe to? More than 50% of the journals we currently subscribe to we receive *only* electronically. E-access to non-journal materials, like engineering handbooks? We have Marks', Perry's, Lange's, Juran's, Roark's, Uhlig's, the entire ASM set, and dozens from CRC, to name just a few of the hundreds now available.

As we all know, change is constant, and no one can keep up with all the changes in areas that impact various aspects of their work and life. But that's where we come in. If you want to know about new developments in information resources in your subject area, please contact the librarian with subject responsibility for your department. We can help keep you up-to-date on changes in information resources that can positively impact your research, teaching, and study.

Mel DeSart  
Head, Engineering Library

## IEEE ENHANCEMENTS

### NEW JOURNALS FOR 2004

The IEEE has approved five new technical periodicals in a range of technologies for publication in 2004. Included are: *IEEE/ACM Transactions on Computational Biology and Bioinformatics*; *IEEE Distributed Systems Online*; *IEEE Geoscience and Remote Sensing Letters*; *IEEE Transactions on Automation Science and Engineering*; and *IEEE Transactions on Dependable and Secure Computing*. All will be available through the UW Libraries' subscription to IEEE Xplore.

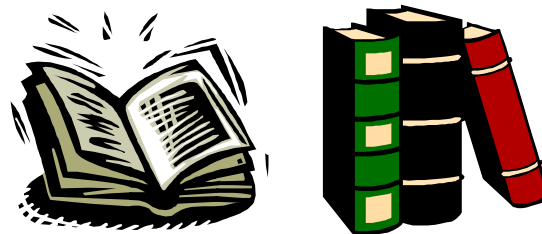
### IEEE Xplore UPGRADE

IEEE will release Version 1.6 of the IEEE Xplore system on December 28, 2003. IEEE Xplore 1.6 features enhanced search capabilities, cover-to-cover indexing of editorial materials for select IEEE publications, and the following new features:

- Search within a search results set
- Highlighted search terms in abstract records
- Cover-to-cover editorial material starting with select 2004 IEEE journals & magazines
- Table of Contents Alerts for IEEE titles
- Reference links for IEEE magazines
- Forward Links displayed when viewed document has been cited by another IEEE document

## JOURNAL REORGANIZATION

In the past, journals that had the word "Journal" and an organization name were shelved at the beginning of all the "Journal" titles (e.g. "Journal. Optical Society of America" came before "Journal of Adhesion") on the second floor of the Engineering Library. By the start of the winter quarter, all journals previously shelved by the word "Journal" followed by an organization name will be reshelved under "Journal of the" followed by the organization name (e.g. *Journal of the Optical Society of America*). This is how nearly all of the titles appear in the Libraries' online catalog and how they are most often cited. We think this reorganization will make these titles easier to find for our users.



Remember, journals are shelved **alphabetically** on the second floor of the Engineering Library.



### LIBRARY TIP...

Ever have a journal citation that you need to verify, but don't know which database indexes that journal?

Or have you wanted to submit an article to a journal, and want to know where it's indexed so that it will be accessible to other researchers?

Well, look no further than **Ulrich's Periodicals Directory!**

**Ulrich's**, available from the UW Libraries' Databases & Catalogs page (<http://www.lib.washington.edu/types/databases/>), gives publication information for thousands of journals in all fields, including indexing information and whether or not the journal is refereed.

Search for your journal by title or ISSN, then click on "Document Access" to see where it is indexed.

You may need to translate the name of the index into the name of the database that the UW Libraries subscribes to. For example, "Engineering Index Monthly" is the Compendex database. Other index/database pairs are:

Science Citation Index = Web of Science  
 Chemical Abstracts = SciFinder Scholar  
 Current Index to Journals in Education = ERIC

As usual, if you have any questions, contact the librarian for your department (see page 4).

## ENGINEERING LIBRARY WINTER CLASS SCHEDULE

### Library Tours

Take a look around the library and find out where things are. These short tours will be especially useful for those who are new to the UW campus or the College of Engineering:

Wednesday, Jan. 7  
9:00-9:30 am

Thursday, Jan. 8  
12:30-1:00 pm

Tuesday, Jan. 13  
9:00-9:30 am

Wednesday, Jan. 14  
12:30-1:00 pm



### Effective Database Searching Techniques

Learn how to construct effective search strategies to get the most out of Engineering databases such as Compendex, Inspec, NTIS, TRIS, etc. The class will cover search techniques that can be used in a variety of Engineering databases.

Monday, Jan. 26  
3:30-5:00 pm

Tuesday, Feb. 10  
5:00 – 6:30 pm

### Introduction to Engineering Research

This one-hour session will go over the basic steps of doing a search for Engineering research literature-- from choosing a database, constructing a search, and finding the articles or papers (online or in print). Bring a topic to research.

Saturday, Jan. 31  
11:00-12:00 noon

Saturday, Feb. 21  
11:00-12:00 noon

### Introduction to Patent Searching

This is an introduction to patent searching. Our patent expert will take you through the process step-by-step, showing how to search the USPTO's Patent Database ([www.uspto.gov](http://www.uspto.gov)) using both print and electronic resources.

Wednesday, Jan. 14  
5:00-6:30 pm

Monday, Feb. 23  
2:00-4:00 pm

### Searching for Standards

Lost in the maze of standards? Learn how to use the specialized Engineering Library and internet resources to identify, locate and obtain national, industry and international standards.

Tuesday, Feb. 3  
1:00-2:00 pm

### Searching Compendex on Engineering Village 2

Compendex is the most comprehensive index available for journal articles, technical reports, and conference papers on all engineering topics. Attend this half-hour session to get an overview of the database and find out how to set up email alerts and search Inspec and Compendex simultaneously (and de-dupe the results!).

Thursday, Jan. 15  
12:30-1:00 pm

Tuesday, Feb. 3  
5:30-6:00 pm

### Searching IEEE Xplore (IEEE/IEE Electronic Library Online)

IEEE Xplore provides full-text access to IEEE transactions, journals, magazines and conference proceedings published since 1988 and all current IEEE Standards. Attend this session to get an overview of this online library, and find out how to make the most of the time you spend searching.

Tuesday, Jan. 20  
5:30-6:00 pm

Monday, Feb. 2  
12:30-1:00 pm

### Searching Inspec on Engineering Village 2

Inspec is the most comprehensive index available for journal articles and conference papers in the physical sciences, electrical engineering, and computer science. Attend this half-hour session to get an overview of the database and find out how to set up email alerts and search Inspec and Compendex simultaneously (and de-dupe the results!).

Tuesday, Jan. 20  
9:00-9:30 am

Tuesday, Feb. 2  
5:30-6:00 pm

All classes will be held in the Engineering Library Instruction Center (ELIC), on the 3rd floor of the Engineering Library, unless otherwise noted.

### Register:

Register by email to [lcwhang@u.washington.edu](mailto:lcwhang@u.washington.edu) listing which class(es) you would like to attend with date(s) and time(s), or by calling 685-8370.

Engineering Library  
Box 352170  
University of Washington  
Seattle, WA 98195-2170

Phone: 206-543-0740  
Fax: 206-543-3305  
Email: [englib@u.washington.edu](mailto:englib@u.washington.edu)

WE'RE ON THE WEB!  
[WWW.LIB.WASHINGTON.EDU/  
ENGINEERING/](http://WWW.LIB.WASHINGTON.EDU/ENGINEERING/)

**Engineering Library Progress** is produced quarterly  
by Engineering Library staff.

Editor: Linda Whang  
Contributors: Mel DeSart, Linda Whang

**Engineering Library Progress** is available online at  
<http://www.lib.washington.edu/engineering/elp/>

## ENGINEERING DEPARTMENT LIAISONS

**Christina Byrne** [cbyrne@u](mailto:cbyrne@u). 685-8371  
Bioengineering

**Julie Cook** [julesck@u](mailto:julesck@u). 685-8367  
Civil & Environmental Engineering

**Mel DeSart** [desart@u](mailto:desart@u). 685-8369  
Aeronautics & Astronautics ■ Industrial  
Engineering ■ Mechanical Engineering

**Susanne Redalje** [curie@u](mailto:curie@u). 543-1604  
Materials Science and Engineering

**Linda Whang** [lcwhang@u](mailto:lcwhang@u). 685-8370  
Computer Science and Engineering ■  
Electrical Engineering ■ Technical Com-  
munication

**Contact the library  
liaison for your department  
for purchasing suggestions  
or class specific instruction**

## NEW WORKSTATIONS!

The Engineering Library now has 14 new **Access+** workstations. The UW Libraries and UW Educational Partnerships and Learning Technologies (EPLT) received Student Technology Fee funding in 2003 to expand the computing services currently available in the Suzzallo-Allen Libraries, Odegaard Undergraduate Library, Foster Business Library, and here in the Engineering Library.



The workstations, in addition to offering access to all standard library and related information resources, also come equipped with the following software and hardware:

### Software:

Microsoft Windows XP ~ Microsoft Office (Word, Excel, PowerPoint, Access) ~ Outlook Express ~ Mozilla Web Browser ~ UWick including: Secure FTP and Teraterm ~ Adobe Acrobat Reader ~ MSN Messenger ~ AOL Instant Messenger ~ Yahoo Messenger ~ Quicktime ~ Windows Media Player ~ Real One Player ~ Winamp ~ Ghost Script ~ Ghost View

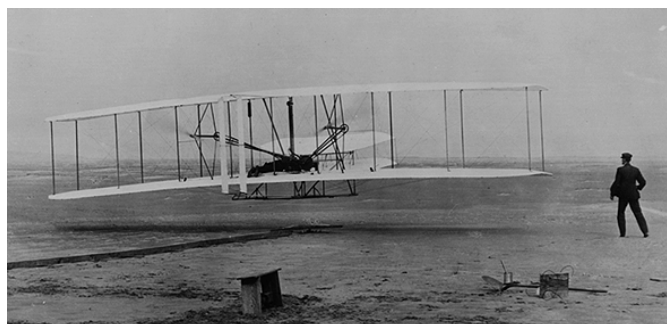
### Hardware:

CD/DVD Drive ~ CD Burner ~ Zip Drive ~ Floppy Drive ~ USB Ports

**Access+** workstations are located on the first floor of the Engineering Library, are connected to the library's networked printer (\$.08/page), and require a valid UWNetID.

We believe that the enhanced functionality of these machines will benefit students, faculty, and staff.

## CELEBRATING A CENTURY OF FLIGHT



Kitty Hawk, North Carolina, December 17, 1903  
Orville Wright's famous first airplane flight.