



# Engineering Library Progress

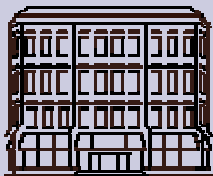
Autumn 2004

Volume 6, Issue 3

## TAKE A PEBBLE

### INSIDE THIS ISSUE:

NEW Databases & Electronic Resources	2
NEW Renewal & Overdue Fines Policies	2
Library Tip... Sherpa	2
Autumn Class Schedule	3
Other News	4
Department Liaisons	4



### Autumn Quarter Hours:

Mon-Thurs	8:00 am-10:00 pm
Friday	8:00 am- 6:00 pm
Saturday	9:00 am- 5:00 pm
Sunday	1:00 pm-10:00 pm

### Reference Hours:

Mon-Thurs	9:00 am-8:00 pm
Friday	9:00 am-5:00 pm
Saturday & Sunday	1:00 pm-5:00 pm

### Contact Us:

Info: 206-543-0740  
Circulation: 206-685-8324  
Reference: 206-543-0741  
Email: [englib@u.washington.edu](mailto:englib@u.washington.edu)

<http://www.lib.washington.edu/engineering/>

The calm surface of a placid body of water is much like what the science, technology, and medicine (STM) publishing world was like for much of the last 15+ years. Almost nothing anyone did seemed to disturb that surface. When journal prices went up, libraries cancelled subscriptions, but little changed. Librarians, plus those few faculty who got involved, complained to publishers about the price increases, but little changed. That calm surface seemed nearly immutable.

From 1986 to 2000, the consumer price index rose approximately 56%. U.S. R&D expenditures rose 120%. But in that same period, journal prices rose over **240%**. Academic libraries, attempting to maintain access to as much of that journal content as possible, increased their journal spending a little over 190% during that same period, in many cases sacrificing money for books and other materials in *all* subject areas in order to support the STM journal budget. As the numbers above show, libraries still fell far short of being able to keep up with publishers' price increases, forcing significant journal cancellations at most schools.

In response to those cancellations, most publishers simply kept raising their subscription prices to compensate for their lost revenue. Over the course of that 14 year period, virtually *nothing* changed in publishers' journal pricing practices, largely because most of what we on the consumer side of the picture did was ineffectual. Why? Journal publication is the lifeblood of academic communication in the STM world and journal publishers know it. And during much of that 14 year period those publishers were the only game in town for supplying that lifeblood. They had a captive (albeit not *quiet*) audience.

But if you take a pebble and toss it into that calm water, what happens? Ripples disturb the surface. Toss in more pebbles, you get more ripples. Toss in bigger pebbles, you get larger ripples. Some of those ripples interfere with each other, some reinforce each other. But no matter what, as long as pebbles are tossed in, the surface stays disturbed. That's exactly what is now happening in the journal publishing world.

*Continued on page 4*

## NEW, IMPROVED OFF-CAMPUS ACCESS

Logging onto library resources from home just got a whole lot easier. Over the summer, the UW Libraries installed a new, improved Proxy Server for off-campus access to UW Restricted databases and electronic resources. The new Proxy Server uses your **UW NetID** and password for authentication, rather than the cumbersome 14-digit barcode number used by the previous Proxy Server.

To access library resources from home, log onto the Proxy Server at <http://offcampus.lib.washington.edu>, or follow the link labeled "Off-Campus Access" found on most UW Libraries web pages. More information about connecting from off-campus can be found at <http://www.lib.washington.edu/help/connect.html>.

Note: If you had been using the old Proxy Server, you may need to remove the proxy service settings from your browser so that you don't receive prompts to enter your barcode # and Library PIN. Instructions are available at <http://www.lib.washington.edu/help/remove.html>.

## NEW DATABASES & ELECTRONIC RESOURCES

### SPIE Digital Library

The SPIE Digital Library contains full-text papers from SPIE (International Society for Optical Engineering) Proceedings and Journals (*Optical Engineering*, *Journal of Electronic Imaging*, *Journal of Biomedical Optics*, and *Journal of Microlithography, Microfabrication and Microsystems*) published since 1998, and citations and abstracts for most SPIE papers published since 1995. Plans are underway to expand the Digital Library back to 1990 by the end of the year. In the meantime, pre-1998 SPIE Proceedings are available in print in the Engineering Library—search the catalog by keyword, “spie and [volume #]”.

<http://www.spiedl.org/>

### AIAA Electronic Library

Search across a database of American Institute of Aeronautics and Astronautics publications including AIAA papers, journals, books, and standards and download full-text papers and journal articles published from 1996 to the present (citations available for content published between 1963 and 1996).

<http://www.aiaa.org/content.cfm?pageid=413>

### NetLibrary Information Technology Books

The UW Libraries has recently added over 100 online technical reference books from NetLibrary. Subjects include programming, communications technology, biometrics, designing usable electronic text, and more! Search the NetLibrary database at <http://www.netlibrary.com/> or the Libraries' Catalog (use keywords, e.g. “netlibrary and php”).

<http://www.netlibrary.com/>

### Dekker E-Books

Full-text science and engineering books from Marcel Dekker. Titles include *Energy Management Handbook*, *Estimating Building Costs*, *Handbook of Optical Engineering*, *Thin Film Transistors*, *Quality Engineering Handbook*, *Nonlinear Control Systems*, *Piping and Pipeline Engineering Design*, *Fundamental Mechanics of Fluids*, and more. Requires Acrobat Reader 6.0.2 or higher. Search the UW Libraries' Catalog for the title “Dekker Ebooks”.

<http://catalog.lib.washington.edu/search~>

### IWA (International Water Association) Journals

Eight IWA journals are available online. They are: *Journal of Hydroinformatics*, *Journal of Water and Health*, *Journal of Water Supply: Research & Technology-AQUA*, *Nordic Hydrology*, *Water Policy*, *Water Research*, *Water Science & Technology*, and *Water Science & Technology: Water Supply*. Search by individual journal title in the Libraries' Catalog or go to:

<http://www.iwapublishing.com/> (Click on Journals)

## NEW LIBRARY RENEWAL & OVERDUE FINES POLICIES

Over the summer, the UW Libraries instituted a new renewal policy. Patrons now have **unlimited renewals** of UW library materials that circulate for more than 14 days, and three renewals on materials that circulate for 14 days or less (generally these are Reserve materials). Books needed by other borrowers cannot be renewed. Items can be renewed in person, over the phone, or online by logging onto “Your Library Account” (<http://catalog.lib.washington.edu/patroninfo>). **Email reminders** are now being sent out two days before items are due. Please make sure your email address is current (log onto “Your Library Account” and click on “Modify Personal Information”—add your email address if it’s not already there) to receive these notices.

The **overdue fine** system has also changed - overdue fines for non-reserve materials will be \$.50 per day with a 4 day grace period, on the fifth day overdue the charge will be \$2.50 with a daily increment of \$.50 for each additional day overdue. When an item is 21 days overdue a replacement cost and a non-refundable \$20 billing fee will be charged. Fines for reserve material will stay the same.



For more information see <http://www.lib.washington.edu/services/borrow/>.

## Library tip...



As an author of scholarly papers, do you ever wonder what your rights with different publishers are regarding pre-print or post-print archiving? Well, **Sherpa** is a cool database that rates publishers on two aspects of copyright: an author's right to post open access pre-prints or post-prints of their own papers. It also includes links to copyright statements of each publisher (which can save you a lot of searching time!).

<http://www.sherpa.ac.uk/romeo.php>

Publishers include major commercial publishers such as Elsevier and Springer-Verlag, as well as organizations and societies such as the American Association for the Advancement of Science, IEEE, IEE, AIAA, ACM, and ASCE.

Created by the RoMEO Project (Rights METadata for Open Archiving) to assist authors in determining where to publish their scholarly research.

# ENGINEERING LIBRARY AUTUMN CLASS SCHEDULE

## Library Tours

Take a look around the library and find out where things are. These short tours will be especially useful for those who are new to the UW campus or the College of Engineering.

Thursday, Sept. 30, 9:00-9:30 am      Friday, Oct. 1, 12:30-1:00 pm  
 Tuesday, Oct. 5, 12:30-1:00 pm      Wednesday, Oct. 6, 9:00-9:30 am

Tours are also available by appointment. Contact Linda Whang ([lcwhang@u.washington.edu](mailto:lcwhang@u.washington.edu) or 685-8370) to schedule a tour.



## Effective Database Searching Techniques

Learn how to construct effective search strategies to get the most out of engineering databases such as Compendex, Inspec, NTIS, Transport, etc. The class will cover search techniques that can be used in a variety of engineering databases.

Tuesday, Oct. 12      Monday, Oct. 25  
 12:30-2:00 pm      5:00-6:30 pm

## Introduction to Engineering Research

This one-hour session will go over the basic steps of doing a search for engineering research literature-- from choosing a database, constructing a search, and finding the articles or papers (online or in print). Bring a topic to research.

Saturday, Oct. 16      Saturday, Nov. 6  
 11:00 am-noon      11:00 am-noon

## Introduction to Patent Searching

This is an introduction to patent searching. Our patent expert will take you through the process step-by-step, showing how to search the USPTO's Patent Database ([www.uspto.gov](http://www.uspto.gov)) using both print and electronic resources.

Wednesday, Oct. 20      Tuesday, Nov. 16  
 2:00-4:00 pm      12:30-2:30 pm

## Searching Compendex on Engineering Village 2

Compendex is the most comprehensive index available for journal articles, technical reports, and conference papers on all engineering topics. Attend this half-hour session to get an overview of the database and find out how to set up email alerts and search Inspec and Compendex simultaneously (and de-dupe the results!).

Monday, Oct. 11      Tuesday, Oct. 26  
 5:30-6:00 pm      12:30-1:00 pm

## Searching IEEE Xplore (IEEE/IEE Electronic Library Online)

IEEE Xplore provides full-text access to IEEE transactions, journals, magazines and conference proceedings published since 1988 and all current IEEE Standards. Attend this session to get an overview of this online library, and find out how to make the most of the time you spend searching.

Monday, Oct. 18      Tuesday, Nov. 9  
 5:30-6:00 pm      12:30-1:00 pm

## Searching Inspec on Engineering Village 2

Inspec is the most comprehensive index available for journal articles and conference papers in the physical sciences, electrical engineering, and computer science. Attend this half-hour session to get an overview of the database and find out how to set up email alerts and search Inspec and Compendex simultaneously (and de-dupe the results!).

Tuesday, Oct. 19      Monday, Nov. 1  
 12:30-1:00 pm      5:30-6:00 pm



### Register:

Register by email to [lcwhang@u.washington.edu](mailto:lcwhang@u.washington.edu) listing which class(es) you would like to attend with date(s) and time(s), or by calling 685-8370.

All classes will be held in the Engineering Library Instruction Center (ELIC), on the 3rd floor of the Engineering Library, unless otherwise noted.

Class schedule is available on the web at <http://www.lib.washington.edu/engineering/classes/classes.html>.

**Help your students learn valuable research skills!**

Librarians are available to come to your classes and teach specialized workshops tailored to the needs of your course or assignment.

Call the librarian for your department today!  
 (See page 4 for Engineering Department Liaison Librarians)

WE'RE ON THE WEB!  
[WWW.LIB.WASHINGTON.EDU/  
ENGINEERING/](http://WWW.LIB.WASHINGTON.EDU/ENGINEERING/)

**Engineering Library Progress** is produced quarterly  
by Engineering Library staff.

Editor: Linda Whang  
Contributors: Mel DeSart, Linda Whang

Engineering Library Progress is available online at  
<http://www.lib.washington.edu/engineering/elp/>

## ENGINEERING DEPARTMENT LIAISONS

**Christina Byrne** [cbyrne@u.washington.edu](mailto:cbyrne@u.washington.edu) 685-8371  
Bioengineering

**Julie Cook** [julesck@u.washington.edu](mailto:julesck@u.washington.edu) 685-8367  
Civil & Environmental Engineering

**Mel DeSart** [desart@u.washington.edu](mailto:desart@u.washington.edu) 685-8369  
Aeronautics & Astronautics ■ Industrial  
Engineering ■ Mechanical Engineering

**Susanne Redalje** [curie@u.washington.edu](mailto:curie@u.washington.edu) 543-1604  
Materials Science and Engineering

**Linda Whang** [lcwhang@u.washington.edu](mailto:lcwhang@u.washington.edu) 685-8370  
Computer Science and Engineering ■  
Electrical Engineering ■ Technical Com-  
munication

Contact the library  
liaison for your department  
with purchasing suggestions  
or for class specific instruction

## TAKE A PEBBLE

*Continued from page 1*

In the late 1990s, libraries and some faculty started doing more than just complaining and canceling subscriptions. The library world created **SPARC**, the **Scholarly Publishing and Academic Resource Coalition** (<http://www.arl.org/sparc>), as a vehicle to help nurture and support alternative ways and means of providing that STM lifeblood. Much of that effort initially took the form of supporting journals that were started as much lower priced alternatives to high-priced existing titles. SPARC now also supports institutional and subject-based repositories, and is a strong supporter of the burgeoning open access movement (see the article in the fall issue of the UW Libraries' newsletter, *Library Directions*, for more on open access). Many other efforts that complement SPARC's work and extend its ideas and ideals in different directions have also appeared in the last few years.

On the faculty side, faculty started making use of and submitting their papers to these alternative publications. They also began to refuse to review for or submit content to some of the most egregious offenders among the existing publishers.

Finally, the journal consumers had found their pebbles. They had found something to toss at the existing publishing community that finally caused that previously nearly unchanging surface to ripple. As the late 1990s segued into the early 2000s, the number of pebbles hitting that surface increased, as more publishing alternatives became available and as more faculty began to take advantage of those alternatives and refused to do business with parts of the existing publishing community. The result? From 2000-2002, the consumer price index continued to increase at roughly the same rate it had the previous 14 years. But the average journal unit price *fell* over 10% in that same period. The number of pebbles being tossed at the water's surface was finally large enough to produce a noticeable effect.

But even though they're having an effect, I think it's time to stop tossing pebbles. Let's start throwing rocks instead.

Mel DeSart  
Head, Engineering Library

## OTHER NEWS...

Check out the Engineering Library's **new web page** (<http://www.lib.washington.edu/engineering>)! The new design allows quicker access to our most popular and useful engineering databases (e.g. Compendex, Inspec, IEEE Xplore, etc.), and to resources arranged by subject.



Mel DeSart wins the **Homer I. Bernhardt Distinguished Service Award** presented by the Engineering Libraries Division of the American Society for Engineering Education. This award recognizes work that "contributes to the advancement and development of excellence in engineering libraries." Congratulations, Mel!

*Left: Mel accepts his award at the 2004 ASEE Conference*