

# Engineering Library Progress

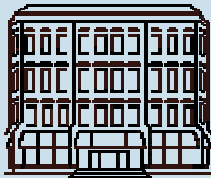
Winter 2005

Volume 7, Issue 1

## A TIME AND A PLACE

### INSIDE THIS ISSUE:

Databases & Electronic Resources News	2
Library Tip... Matweb	2
Winter Class Schedule	3
Library Update	4
Engineering Library Progress Contest	4
Department Liaisons	4



### Winter Quarter Hours:

Mon-Thurs	8:00 am-10:00 pm
Friday	8:00 am- 6:00 pm
Saturday	9:00 am- 5:00 pm
Sunday	1:00 pm-10:00 pm

### Reference Hours:

Mon-Thurs	9:00 am-8:00 pm
Friday	9:00 am-5:00 pm
Saturday & Sunday	1:00 pm-5:00 pm

### Contact Us:

Info: 206-543-0740  
Circulation: 206-685-8324  
Reference: 206-543-0741  
Email: [englib@u.washington.edu](mailto:englib@u.washington.edu)

<http://www.lib.washington.edu/engineering/>

As the old saying goes, there's a time and a place for everything. For some things that may very well be true, but that has *never* been true when it comes to the research, teaching and study needs of members of a university community. There is no specific time or single place where faculty do their research or prepare their teaching materials. Likewise, students study, complete homework assignments, write papers, and (for some) participate in research projects or similar activities in dozens of different locales and at pretty much any time of the day or night.

Historically, libraries were unable to support the kinds of activities listed above in a manner that fit with the time and location wants/needs of that user community. Our collections, services and staff were located in particular physical locations (main or branch libraries) and were only available during specific hours at each of those locations.

However, that is now changing, and changing quite rapidly. The UW Libraries recognized years ago that our users' needs for materials, services and staff didn't happen at *a* time and *a* place, but rather at virtually *any* time and *any* place. With that as a premise, the Libraries formed a task force to look at the needs of an any time, any place user community and to suggest changes that the Libraries could make to better serve that community. Many of the recommendations from the task force have been implemented, while the implementation of others awaits additional funding or staffing.

Changes that have been made to help serve those "any time, any place" needs include:

- Electronic access to large portions of our collections. In the Engineering Library, nearly 80% of our journals are now available electronically, and over 50% are *only* available electronically. Thousands of books and conference proceedings are also available. That availability, combined with a mechanism for providing off-campus access to members of the university community (see <http://www.lib.washington.edu/help/connect.html> for more information), has meant that those collections can be accessed at virtually any time of the day or night, and from Bombay to Brisbane or Buenos Aires to (a little closer to home) Ballard.
- Staff are providing reference assistance by phone, e-mail, or chat, as well as in-person at locations across campus.
- The Odegaard Undergraduate Library is open 24 hours a day, five days a week to offer better access to collections, study space, and computers.
- Library fines can now be paid online (see <https://www.lib.washington.edu/services/borrow/fines/payfines.html>).
- Interlibrary Loan requests can be placed online, and in many cases, articles are delivered online as well (see <http://www.lib.washington.edu/uworld/>).
- Wireless connectivity is available in some campus libraries, with more to come.

While many strides have been made, there is still much that can and will be done in the future to make the Libraries better conform to the needs and schedules of its users rather than forcing those users to function within limitations imposed by the Libraries. If you have suggestions of changes the Libraries could make in this vein, please let me know ([desart@u.washington.edu](mailto:desart@u.washington.edu)).

Mel DeSart  
Head, Engineering Library

## DATABASES & ELECTRONIC RESOURCES NEWS

### INSPEC ARCHIVE— NEW!

We have recently received special funding to purchase the **Inspec Archive**, which extends our online coverage of the Inspec database all the way back to 1896 (we previously had access to data from 1969-present).

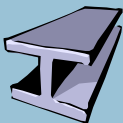
Inspec, as you may know, is the premier index to research literature in physics, electrical engineering and electronics, computing and control, and information technology. The Inspec Archive contains over 873,000 records including records for research by important and influential researchers such as Albert Einstein and Guglielmo Marconi.

Data contained in the Inspec Archive was previously available only in print in three separate indexes: *Physics Abstracts*, *Electrical & Electronics Abstracts*, and *Computer & Control Abstracts*. With the Inspec Archive, which blends seamlessly with the Inspec database, you can now search over 100 years of engineering developments in one search! Records have been indexed using current Inspec thesaurus terms and classification codes to make searching across all years of the database consistent.

Access the Inspec Archive by clicking on the “Inspec” link on the Engineering Library’s home page (<http://www.lib.washington.edu/engineering/>).

### LIBRARY TIP...

Do you ever need to know the tensile strength of a stainless steel? The dielectric constant of a piezoelectric ceramic? Or the density of cherry wood?



The answers to these kinds of questions can be found in **MatWeb**, a searchable database of material data sheets for over 45,000 metals, plastics, ceramics, composites, and other types of materials. Included are electrical, mechanical, thermal, optical, and physical properties of engineering materials.

Search by material name (e.g. AISI 6150), metal composition, material type or category, polymer manufacturer or trade name, metal alloy UNS number, or specify properties and find materials or polymer films that meet those specifications.

Use of MatWeb is free to the general public, however, advanced features are only available to registered and premium members (at a cost). MatWeb is available at <http://www.matweb.com>.

### CURRENT CONTENTS

The Current Contents database is one of the UW Libraries’ most popular databases for article citations and tables of contents of leading journals in the sciences, social sciences, and humanities. On January 1st, the UW switched vendors for the Current Contents database from WebSPIRS to ISI. The ISI platform offers several advantages: it’s updated daily instead of weekly, includes more content and links to full-text articles, and shares the same search interface as the Web of Science database.

If you have searches saved on the previous version of Current Contents, you will need to resave them in the new version. Contact a librarian if you need assistance.

Current Contents is available at <http://isiknowledge.com/cc>.

### KLUWER AND SPRINGER JOURNALS ONLINE— NEW!

Thanks to a cooperative agreement with the Orbis-Cascade Alliance, we now have online access to *all* journals published by Kluwer and Springer, not just the ones that we subscribe to in print. Journals recently added through this agreement include: *Journal of grid computing*, *Environmental engineering and policy*, *Bioprocess and biosystems engineering*, *Journal of computational electronics*, *Optimization and engineering*, *Microfluidics and nanofluidics*, and many, many more.

These journals may be access through the UW Libraries Catalog (<http://catalog.lib.washington.edu/search~/>) or from the Libraries’ E-journals web page (<http://www.lib.washington.edu/types/ejournals/>).

More information about the Orbis-Cascade Alliance can be found at <http://www.orbiscascade.org/>.

### SPIE TECHNOLOGY BULLETINS

If your work involves Nanotechnology, Remote Sensing, Biomedical Optics, or Defense and Security, you may want to sign up for one of the SPIE’s (The International Society for Optical Engineering) free, quarterly email updates.

The updates will keep you informed of activities in these areas and contain information from sources including the SPIE Digital Library.

To sign up, go to <http://spie.org/app/ebulletins/>.

## ENGINEERING LIBRARY WINTER CLASS SCHEDULE

### Library Tours

Take a look around the library and find out where things are. These short tours will be especially useful for those who are new to the UW campus or the College of Engineering.

Tours are available by appointment. Contact Linda Whang ([lcwhang@u.washington.edu](mailto:lcwhang@u.washington.edu) or 685-8370) to schedule a tour.



### Effective Database Searching Techniques

Learn how to construct effective search strategies to get the most out of engineering databases such as Compendex, Inspec, NTIS, Transport, etc. The class will cover search techniques that can be used in a variety of engineering databases.

Monday, Jan. 31 3:30-5:00 pm	Tuesday, Feb. 8 5:00-6:30 pm
---------------------------------	---------------------------------

### Introduction to Engineering Databases

This one-hour session will go over the basic steps of doing a search for engineering research literature-- from choosing a database, constructing a search, and finding the articles or papers (online or in print). Bring a topic to research.

Thursday, Jan. 20 12:00-1:00 pm	Saturday, Feb. 12 12:00-1:00 pm
------------------------------------	------------------------------------

### Introduction to Patent Searching

This is an introduction to patent searching. Our patent expert will take you through the process step-by-step, showing how to search the USPTO's Patent Database ([www.uspto.gov](http://www.uspto.gov)) using both print and electronic resources.

Wednesday, Jan. 19 2:00-4:00 pm	Tuesday, Feb. 22 12:30-2:30 pm
------------------------------------	-----------------------------------

“Engineers with solid library research skills will generally produce more thorough reports than those without. The ideal time for the engineer to develop his or her information gathering and management skills is not when entering the corporate world, rather it is **during the engineering education** where engineering library resources... are virtually always superior to that of the corporate world...”

- Ronald J. Rodrigues, Information Research Consultant, Agilent Technologies Laboratory, in his article “Industry Expectations of the New Engineer.”

Schedule a library instruction session for your class today! See page 4 for your departmental librarian's contact information.

### Searching Compendex

Compendex is the most comprehensive index available for journal articles, technical reports, and conference papers on all engineering topics. Attend this half-hour session to get an overview of the database and find out how to set up email alerts and search Inspec and Compendex simultaneously (and de-dupe the results!).

Monday, Jan. 10 12:30-1:00 pm	Tuesday, Feb. 15 5:30-6:00 pm
----------------------------------	----------------------------------

### Searching IEEE Xplore (IEEE/IEE Electronic Library Online)

IEEE Xplore provides full-text access to IEEE transactions, journals, magazines and conference proceedings published since 1988 and all current IEEE Standards. Attend this session to get an overview of this online library, and find out how to make the most of the time you spend searching.

Thursday, Jan. 20 12:30-1:00 pm	Monday, Feb. 7 5:30-6:00 pm
------------------------------------	--------------------------------

### Searching Inspec

Inspec is the most comprehensive index available for journal articles and conference papers in the physical sciences, electrical engineering, and computer science. Attend this half-hour session to get an overview of the database and find out how to set up email alerts and search Inspec and Compendex simultaneously (and de-dupe the results!).

Tuesday, Jan. 18 5:30-6:00 pm	Wednesday, Feb. 16 12:30-1:00 pm
----------------------------------	-------------------------------------

### Register:

Register by email to [lcwhang@u.washington.edu](mailto:lcwhang@u.washington.edu) listing which class(es) you would like to attend with date(s) and time(s), or by calling 685-8370.

All classes will be held in the Engineering Library Instruction Center (ELIC), on the 3rd floor of the Engineering Library.

Class schedule is available on the web at <http://www.lib.washington.edu/engineering/classes/classes.html>.

Engineering Library  
Box 352170  
University of Washington  
Seattle, WA 98195-2170

Phone: 206-543-0740  
Fax: 206-543-3305  
Email: [englib@u.washington.edu](mailto:englib@u.washington.edu)

WE'RE ON THE WEB!  
[WWW.LIB.WASHINGTON.EDU/  
ENGINEERING/](http://WWW.LIB.WASHINGTON.EDU/ENGINEERING/)

**Engineering Library Progress** is produced quarterly  
by Engineering Library staff.

Editor: Linda Whang  
Contributors: Mel DeSart, Linda Whang

Engineering Library Progress is available online at  
<http://www.lib.washington.edu/engineering/elp/>

## ENGINEERING DEPARTMENT LIAISONS

**Christina Byrne** [cbyrne@u.](mailto:cbyrne@u.washington.edu) 685-8371  
Bioengineering

**Julie Cook** [julesck@u.](mailto:julesck@u.washington.edu) 685-8367  
Civil & Environmental Engineering

**Mel DeSart** [desart@u.](mailto:desart@u.washington.edu) 685-8369  
Aeronautics & Astronautics ■ Industrial  
Engineering ■ Mechanical Engineering




**Susanne Redalje** [curie@u.](mailto:curie@u.washington.edu) 543-1604  
Materials Science and Engineering

**Linda Whang** [lcwhang@u.](mailto:lcwhang@u.washington.edu) 685-8370  
Computer Science and Engineering ■  
Electrical Engineering ■ Technical Com-  
munication

**Contact the library  
liaison for your department  
with purchasing suggestions  
or for class specific instruction**


## LIBRARY UPDATES

Changes are occurring in the Engineering Library. Updates to note:

- **EndNote** software has been installed on the Access+ computers located on the first floor of the Engineering Library. These computers are available for use by UW faculty, staff, and students only. EndNote software allows you to import citations from databases such as Compendex, Inspec, or Web of Science, create a database of these citations, and automatically format bibliographies in a range of citation styles. Let EndNote take care of formatting details like indentations, italics, initials or full first names, so that you have more time to read, write, and do research! More information about EndNote can be found at <http://www.endnote.com>.  

- We have installed a **CD/DVD burner** on the microform reader/printer/scanner station on the first floor to facilitate saving large, scanned image files of microfilm or microfiche. For more information and instructions on how to use it, see <http://www.lib.washington.edu/engineering/micreadprint.html>.  

- Reminder: The Engineering Library has seven **group study rooms**, including two new rooms on the second floor (by the photocopiers). Group study rooms are first-come, first-served and all have or soon will have white boards. The fourth floor rooms and room 203 on the second floor have Ethernet ports.  


## THE FIRST-EVER ENGINEERING LIBRARY PROGRESS CONTEST!

*Engineering Library Progress* has been published in its current incarnation since Spring 2002 (vol. 4, issue 1). In the past seven issues, starting with Autumn 2002 through this one, the titles of Mel DeSart's column that appears on page 1 of each issue all have something in common. If you think you know what it is, send an email to [englib@u.washington.edu](mailto:englib@u.washington.edu). A winner will be randomly selected from all correct answers to win a fabulous prize, like a gift certificate to the University Bookstore. The deadline is January 31, 2005, and the winner will be announced in the next issue of ELP. Good luck!



All issues of *Engineering Library Progress* can be found at <http://www.lib.washington.edu/engineering/elp/>.