

# Engineering Library Progress

Spring 2005

Volume 7, Issue 2

## THE GAMBLER

### INSIDE THIS ISSUE:

Databases & Electronic Resources News	2
Spring Class Schedule	3
Database Trials	4
ELP Contest Winner	4
Department Liaisons	4

We in the Engineering Library spend lots of time making purchasing decisions that will affect both you and your students. We decide which journals to buy, journals to cancel, article databases to pay for and make available, books to buy (both electronic and print - primarily for student use), and other specialized collections to acquire, particularly technical reports and standards. In many cases, those decision are made based on input that you provide.

The point at which we most often ask for wide input is when we're in a situation where budgets force us to cancel journals. We don't *want* to cancel titles that faculty or students use, but the simple fact is, we can't afford to continue to buy everything that you will want to use, nor do our budgets generally keep up with the rate of increase in serial subscription prices. That leads to the necessity of sometimes canceling titles. At this point, it is much too early in the year for us to have any budget projections for 2006, but rest assured, if we *do* have to cancel, we will be coming to you and asking for your input into that process. If we do, please offer us a bit of your time and expertise.

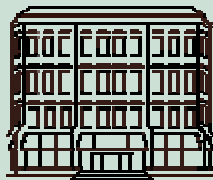
Hundreds of the journals that we now receive come as parts of packages, many from engineering societies and other not-for-profits. But much of our serial budget annually goes to packages from commercial publishers such as Elsevier, Wiley, Springer/Kluwer, etc. Here's a picture of the decision we face at some point this year on the Libraries' Elsevier package. Please read through it and tell me what *you* would do.

We are currently in the final year of a three year agreement with Elsevier which provides us access to hundreds of titles we subscribe to as well as additional titles that WSU subscribes to that we don't. It also gets us those titles at less than their regular subscription price. Sounds like a great situation, right? In good budget years, it is. In bad budget years, it takes on a whole different look. What is also part of that agreement is our contractual inability to cancel *any* Elsevier subscriptions for the duration of the agreement. If we renew based on the offer that Elsevier has presented us for 2006 and beyond, that inability to cancel would continue.

In good budget years, that's a non-issue. But if dollars are tight and we have to cancel journals, re-entering into an agreement like what we have had for the last three years (and what we've been offered again) would mean that Elsevier titles couldn't be cancelled. That would require us to cancel titles from other publishers, many of which receive *far* more use (some of that use probably by you and your students) than some of the Elsevier titles we currently have access to, simply because the Elsevier content is "off limits". But if we drop out of the agreement we currently have, we would have to pay list price for any titles that we retained, not the discounted price we pay now. That would mean we would have to cancel roughly 30% of the Elsevier titles we currently subscribe to, just to end up spending the *same* amount we're spending now on Elsevier journal content. But, by doing so, if we were required to cancel, we could retain higher use titles from other publishers and cancel lower use Elsevier titles instead.

We *are* going to have to make this decision later this year. So, I ask again, what would *you* do, gamble on budgets being good and renew the deal or drop it in case the budget situation forces significant journal cancellations? Let me know at [desart@u.washington.edu](mailto:desart@u.washington.edu). We'll post aggregated comments (names withheld) in the next issue of ELP.

Mel DeSart  
Head, Engineering Library



### Spring Quarter Hours:

Mon-Thurs 8:00 am-10:00 pm  
Friday 8:00 am- 6:00 pm  
Saturday 9:00 am- 5:00 pm  
Sunday 1:00 pm-10:00 pm

### Reference Hours:

Mon-Thurs 9:00 am-8:00 pm  
Friday 9:00 am-5:00 pm  
Saturday & Sunday  
1:00 pm-5:00 pm

### Contact Us:

Info: 206-543-0740  
Circulation: 206-685-8324  
Reference: 206-543-0741  
Email: [englib@u.washington.edu](mailto:englib@u.washington.edu)

<http://www.lib.washington.edu/engineering/>

## DATABASES & ELECTRONIC RESOURCES NEWS

### WEB OF SCIENCE CITATION ALERTS

How would you like to receive an email every time someone cites one of your published papers? Or would you like to know whenever someone cites an article of particular importance to your field? Web of Science has a **citation alerting service** that will do just that.

Here's how to set it up. At the very top of the main WoS page, choose **Citation Alerts** from the drop-down menu, click on **Register** and follow the directions. Then look in WoS for the article(s) that you want to track. On the far right-hand side of the results list, you'll see a link that says **View Record**. Click on that link, and on the next screen, click on the button labeled **Create Citation Alert**. Note: if an article does not have a **View Record** link, you will not be able to set up an alert for it.

Web of Science adds new records every week. If a new record cites the article you're tracking, you will receive an email with a link to the new record. Web of Science is available from the Engineering Library's homepage at: <http://www.lib.washington.edu/engineering/>.

### IEEE XPLORE 2.0

On March 26, IEEE unveiled **IEEE Xplore 2.0**. The new, updated web site features a more functional design and new features such as:

- Full-text searching of all content (currently more than 1.1 million documents)
- Ability to focus searches on only the latest content
- Journal "homepages" with full information about a title's scope, sponsoring IEEE societies, manuscript submissions, and links to past and present issues.
- Consolidated title listings for all IEEE journals and many IEEE conferences.

Access IEEE Xplore from <http://www.lib.washington.edu/engineering/guides/englibdb.html>.

#### NEWS FLASH!

Compendex Backfiles will be available later this quarter!  
Search the entire Compendex database from 1884-present!

Combine with Inspec, 1896-present!  
Available at <http://www.lib.washington.edu/engineering/>

### COMPENDEX & INSPEC RSS FEEDS

Two important engineering databases, **Compendex** and **Inspec**, available on a platform known as Engineering Village 2, or EV2, now provide **RSS feeds** of your search queries. Use this service to get weekly updates of new records that match your search criteria, tables of contents of your favorite journals or conference proceedings (search by journal or conference title), or to see what colleagues in your field are publishing (search by author name).

#### To set up an RSS feed in EV2:

Once you have run a search in Compendex or Inspec, click on the RSS button (see below) on the results page. Copy and paste the URL that appears in the pop-up window into your favorite RSS reader (such as bloglines.com). Each week, when Compendex and Inspec are updated, new results matching your queries will be delivered to your RSS reader. The EV2 RSS feed includes titles of the records and links back to EV2 for the detailed record.

The screenshot shows the Engineering Village 2 interface. At the top, there are navigation links for 'Search History', 'Selected Records', and 'My Profile'. Below that are search options: 'Basic Search', 'Quick Search', 'Expert Search', 'Thesaurus', and 'eCode'. A 'Results Manager' section allows users to select a range of results and choose a format (Citation, Abstract, Detailed record). A circled 'RSS' button is highlighted with an arrow pointing to the text 'Click here to set up your RSS feed!'. The search results section shows 11341 records found in Compendex for (nanotechnology)/NANOTECH, 1889-2005. The first result is 'Fabrication of magnetic ring structures for Lorentz electron microscopy' by Christian, L.J., et al., published in 'Magnetic Materials' in April 2006. The RSS button is located to the right of the search results.

Click here to set up your RSS feed!

Links to Compendex and Inspec are available on the Engineering Library's homepage at: <http://www.lib.washington.edu/engineering/>.

## ENGINEERING LIBRARY SPRING CLASS SCHEDULE

### Library Tours

Take a look around the library and find out about the library's collections and services. These short tours will be especially useful for those who are new to the UW campus or the College of Engineering.

Tours are available by appointment. Contact Linda Whang ([lcwhang@u.washington.edu](mailto:lcwhang@u.washington.edu) or 685-8370) to schedule a tour.



### Effective Database Searching Techniques

Learn how to construct effective search strategies to get the most out of engineering databases such as Compendex, Inspec, NTIS, Transport, etc. The class will cover search techniques that can be used in a variety of engineering databases.

Tuesday, April 12  
5:00-6:30 pm

Monday, April 25  
3:30-5:00 pm

### Introduction to Engineering Databases

This one-hour session will go over the basic steps of doing a search for engineering research literature-- from choosing a database, constructing a search, and finding the articles or papers (online or in print). Bring a topic to research.

Thursday, April 14  
12:00-1:00 pm

Wednesday, April 27  
5:00-6:00 pm

### Introduction to Patent Searching

An introduction to patent searching. Our patent expert will take you through the process step-by-step, showing how to search the USPTO's Patent Database ([www.uspto.gov](http://www.uspto.gov)) using both print and electronic resources.

Wednesday, April 20  
2:00-4:00 pm

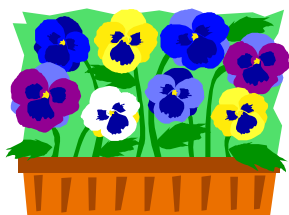
Tuesday, May 24  
12:30-2:30 pm

### EndNote for Engineers— NEW!

Learn how to download citations from Compendex, Inspec, IEEE Xplore, Web of Science, NTIS, the UW Libraries Catalog, and Ovid databases such as ERIC and PsycINFO, and import them into your own personal EndNote library. This class will be useful to anyone who needs to manage large numbers of citations.

Tuesday, April 19  
12:00-1:00 pm

Wednesday, May 4  
12:00-1:00 pm



### Searching Compendex

Compendex is the most comprehensive index available for journal articles, technical reports, and conference papers on all engineering topics. Attend this half-hour session to get an overview of the database and find out how to set up email alerts and search Inspec and Compendex simultaneously (and de-dupe the results!).

Wednesday, April 13  
12:00-12:30 pm

Monday, May 2  
5:00-5:30 pm

### Searching IEEE Xplore (IEEE/IEE Electronic Library Online)

IEEE Xplore provides full-text access to IEEE transactions, journals, magazines and conference proceedings published since 1988 and all current IEEE Standards. Attend this session to get an overview of this online library, and find out how to make the most of the time you spend searching.

Tuesday, April 26  
12:00-12:30 pm

Monday, May 16  
5:00-5:30 pm

### Searching Inspec

Inspec is the most comprehensive index available for journal articles and conference papers in the physical sciences, electrical engineering, and computer science. Attend this half-hour session to get an overview of the database and find out how to set up email alerts and search Inspec and Compendex simultaneously (and de-dupe the results!).

Monday, April 18  
5:00-5:30 pm

Tuesday, May 10  
12:00-12:30 pm

### Register:

Register by email to [lcwhang@u.washington.edu](mailto:lcwhang@u.washington.edu) listing which class(es) you would like to attend with date(s) and time(s), or by calling 685-8370.

All classes will be held in the Engineering Library Instruction Center (ELIC), on the 3rd floor of the Engineering Library.

Class schedule is available on the web at <http://www.lib.washington.edu/engineering/classes/classes.html>.

Engineering Library  
Box 352170  
University of Washington  
Seattle, WA 98195-2170

Phone: 206-543-0740  
Fax: 206-543-3305  
Email: [englib@u.washington.edu](mailto:englib@u.washington.edu)

WE'RE ON THE WEB!  
[WWW.LIB.WASHINGTON.EDU/  
ENGINEERING/](http://WWW.LIB.WASHINGTON.EDU/ENGINEERING/)

**Engineering Library Progress** is produced quarterly  
by Engineering Library staff.

Editor: Linda Whang  
Contributors: Mel DeSart, Linda Whang

Engineering Library Progress is available online at  
<http://www.lib.washington.edu/engineering/elp/>

## ENGINEERING DEPARTMENT LIAISONS

**Christina Byrne** [cbyrne@u.washington.edu](mailto:cbyrne@u.washington.edu). 685-8371  
Bioengineering

**Julie Cook** [julesck@u.washington.edu](mailto:julesck@u.washington.edu). 685-8367  
Civil & Environmental Engineering

**Mel DeSart** [desart@u.washington.edu](mailto:desart@u.washington.edu). 685-8369  
Aeronautics & Astronautics ■ Industrial  
Engineering ■ Mechanical Engineering

**Susanne Redalje** [curie@u.washington.edu](mailto:curie@u.washington.edu). 543-1604  
Materials Science and Engineering

**Linda Whang** [lcwhang@u.washington.edu](mailto:lcwhang@u.washington.edu). 685-8370  
Computer Science and Engineering ■  
Electrical Engineering ■ Technical Com-  
munication

Contact the library  
liaison for your department  
with purchasing suggestions  
or for class specific instruction

## DATABASE TRIALS

The Engineering Library is currently running two database trials— one for the Faulker Information Services' FAITS and SMP Databases, and one for McGraw-Hill's Digital Engineering Library. Take a look during the trial periods and let us know what you think about these resources. Please send comments to [englib@u.washington.edu](mailto:englib@u.washington.edu).

### Faulker Advisory for Information Technology Studies (FAITS) Faulker Security Management Practices (SMP)

FAITS contains hundreds of practical reports on technology topics in the areas of IT Infrastructure, Telecommunications, Wireless Technology, Security, Data Networking, Internet and WWW, as well as product and company profiles. SMP's reports cover security issues including identity theft, digital copyright law, emergency management and more.

Access: <http://www.faulkerlibrary.com>  
Username/Password: uwash/huskies  
When: April 12-26

### McGraw-Hill Digital Engineering Library

The McGraw-Hill Digital Engineering Library contains searchable articles from more than 150 McGraw-Hill engineering books such as *Facility Design and Management Handbook*, *Geotechnical Earthquake Engineering Handbook*, *Handbook of Optics*, and many, many more. Also includes classic reference titles such as *Mark's Standard Handbook for Mechanical Engineers*, *Perry's Chemical Engineer's Handbook*, *Standard Handbook for Electrical Engineers*, and *Roark's Formulas for Stress and Strain*.

This trial will run from April 18-May 17. Instructions for logging onto the trial web site will be sent by email when we receive them.

Please note: These trials are for University of Washington faculty, staff, and students only.

## ENGINEERING LIBRARY PROGRESS CONTEST WINNER!

Congratulations to Greg Crowther, our first Engineering Library Progress (ELP) Contest Winner! He correctly identified the common theme uniting the titles of Mel DeSart's columns from the last seven issues of ELP. They were: *Knife-Edge*, *The Endless Enigma*, *Changing States*, *Change*, *Touch and Go*, *Take a Pebble*, *A Time and a Place*, and this issue's title, *The Gambler*. In addition to being the titles of Mel's always insightful (or inciteful?) columns, each of these is also the title of an Emerson, Lake, and Palmer (ELP) song. In his winning response, Greg, a lecturer in the Department of Chemical Engineering, said that he "look[s] forward to reading future columns like *Honky Tonk Train Blues*."



For his sharp eye and in-depth knowledge of Emerson, Lake, and Palmer, Greg wins a \$20 gift certificate to the University Bookstore.

Stay tuned for future ELP Contests (and Mel's *Honky Tonk Train Blues*)!