



# Engineering Library Progress

Autumn 2005

Volume 7, Issue 3

## THE OLD CASTLE

### INSIDE THIS ISSUE:

Databases & Electronic Resources News	2
Autumn Class Schedule	3
Safari Tech Books Survey	4
Department Liaisons	4

Every three years the University of Washington Libraries conducts a week long survey of our users, asking questions about your use of the various collections, resources, and services we have to offer. Those surveys, which were handed out to everyone who walked in the door of the Engineering Library during a one week period this spring, also contained areas that allowed users to submit free-text comments. We were glad to see that many of you took advantage of that opportunity. What follows are some of the most often received comments related to the Engineering Library and what we've tried to do to address the issues you raised.

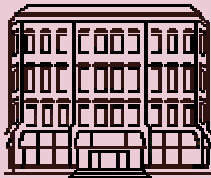
The most comments received about a single topic were requests for **wireless access** within the Library. Those requests were heard and communicated to those involved in planning and scheduling the campus-wide deployment. The result? The Engineering Library was the second building on campus to receive wireless as part of that campus-wide installation schedule. Wireless connectivity went live the week before classes started. Come check it out!

A number of people also asked for more **group study rooms**, which is curious, since we already have *seven* and we rarely find the two newest ones on the second floor being used. Whiteboards for those second floor rooms have now been received and installation is being scheduled.

Another request was for more **seated computers**. Done! We have reconfigured space for most of the workstations on the first floor, which generated room to move two machines from the tall tables at the back of the first floor onto desk height surfaces. In addition, tall chairs were added for a number of the remaining workstations at the back of the first floor. Where we previously had six workstations without chairs, now we have only one.

You wanted better quality **photocopiers** (and so did we). Guess what? Three new ones have been delivered and installed in the Engineering Library in the last two weeks. Dozens of others are being installed in other libraries across campus as a result of a joint effort by the Libraries and campus Copy Services.

*Continued on page 4*



### Autumn Quarter Hours:

Mon-Thurs 8:00 am-10:00 pm  
 Friday 8:00 am- 6:00 pm  
 Saturday 9:00 am- 5:00 pm  
 Sunday 1:00 pm-10:00 pm

### Reference Hours:

Mon-Thurs 9:00 am-8:00 pm  
 Friday 9:00 am-5:00 pm  
 Saturday & Sunday  
 1:00 pm-5:00 pm

### Contact Us:

Info: 206-543-0740  
 Circulation: 206-685-8324  
 Reference: 206-543-0741  
 Email: [englib@u.washington.edu](mailto:englib@u.washington.edu)

<http://www.lib.washington.edu/engineering/>

## WIRELESS NOW AVAILABLE!



Beginning this quarter, **wireless access** is now available throughout the Engineering Library! As part of the UW Wireless Initiative, the Engineering Library was selected to be part of the first wave of wireless installations to be installed across campus in the next three years.

In order to connect to the wireless network, you will need **802.11b** or **802.11g** connectivity hardware, and the network is named "University of Washington."

No log-in is required to use the UW's wireless service unless you want to connect to services or sites outside the UW. For access to non-UW sites, you will need to log in with your UW NetID and password.

For more information about the UW's wireless network, including a list of locations on campus with wireless access, see <http://www.washington.edu/computing/wireless/>.

Bring your laptop and go wireless!

## DATABASES & ELECTRONIC RESOURCES NEWS

### ENGINEERING VILLAGE 2 ENHANCEMENTS



This summer, a new version of Engineering Village 2 was released. Engineering Village 2 (or EV2) is the platform that we use to access the **Compendex** and **Inspec** databases, two of our major engineering research databases.

Enhancements include:

**Faceted Searching.** You'll notice a "faceting bar" that appears to the right of search results when using either Quick Search or Expert Search. The faceting bar displays the most frequent occurrences of controlled terminology across the result set and displays the number of records that contain those terms. You can use the faceting bar to refine your searches by selecting terms to include or exclude from the original result set.

**RSS Alerts.** This feature, which was featured in the last issue of *Engineering Library Progress*, has been added as a permanent feature to EV2 (it was previously in beta and only available to selected universities). At the top of every result list, you'll see an orange button labelled "RSS." Clicking on the RSS button will open a pop-up window with a custom URL corresponding to your search. By pasting this string into an RSS reader, you can have documents that match your search criteria delivered to your RSS reader as your database (Compendex and/or Inspec) is updated every week.

**Blog This.** Share references to interesting articles with readers of your blog by using the new "Blog This" feature. On the Abstract and Detailed Record screens, an orange "Blog This" button appears at the top of the screen. Clicking on this button will open a pop-up window containing HTML code which can be pasted into your blog.

**Expert Search Autostemming.** This feature, previously available only on the Quick Search screen, has been added to Expert Search. Autostemming will search for variant endings of the root of the word entered. For example, if you type in "controllers," autostemming will also search for control, controlling, controls, etc. Autostemming will provide broader search results automatically.

Links to EV2 databases Compendex and Inspec are available on our home page: <http://www.lib.washington.edu/engineering/>.

### SCIFINDER SCHOLAR UPDATE

**SciFinder Scholar** is the intelligent user interface to the **Chemical Abstracts** databases. These databases index the chemical literature, including excellent patent coverage from 1907 to the present. Coverage dates are actually pushing back further as CAS has begun indexing many of the electronic archives which become available. For example, there are abstracts for all *Journal of the American Chemical Society* articles from volume 1, 1879.

The CAS definition of 'chemical' is broad and the databases provide access to excellent resources for users in all areas of science. Anyone, for example, in the areas of bioengineering, polymers, surfaces, nanotechnology, and materials will find it an excellent resource. Strengths of the database include the capability to search by structure and newly added similarity searching, reactions searching, and inclusion of property data for many compounds.



Unlike most of the UW Libraries electronic databases, SciFinder Scholar is not web-based. It is client-server based, allowing it to be a very powerful system but problematic to authenticate valid users. Until recently, users from off campus had to rely on dial-up access. That was obviously quite slow by current standards and impossible to use by people who rely on broadband. This summer the Libraries began offering a new proxy server specifically for SciFinder Scholar and other client-server services such as *MDL Beilstein Crossfire*. This server, called the **portforwarder**, allows UW students, faculty, and staff using any type of broadband, Mac or PC, to connect to SciFinder. Users need to connect first to the portforwarder, using their UWNID and then log into SciFinder Scholar. For complete details, please go to: <http://www.lib.washington.edu/chemistry/portforwarder.html> for details and instructions.

Current users should also be aware that the new version-SFS2006-is now available for PCs. The Mac client will come out later. This version is much easier to use on several fronts. Take a look. The new client is found at: <http://www.lib.washington.edu/chemistry/SciFinder/>.

## ENGINEERING LIBRARY AUTUMN CLASS SCHEDULE

### Library Tours

Take a look around the library and find out about the library's collections and services. These short tours will be especially useful for those who are new to the UW campus or the College of Engineering.

Tours are available by appointment. Contact Linda Whang ([lcwhang@u.washington.edu](mailto:lcwhang@u.washington.edu) or 685-8370) to schedule a tour.



### Effective Database Searching Techniques

Learn how to construct effective search strategies to get the most out of engineering databases such as Compendex, Inspec, NTIS, Transport, etc. The class will cover search techniques that can be used in a variety of engineering databases.

Tuesday, Oct. 18  
5:00-6:30 pm

Monday, Oct. 31  
12:30-2:00 pm

### Introduction to Engineering Databases

This one-hour session will go over the basic steps of doing a search for engineering research literature-- from choosing a database, constructing a search, and finding the articles or papers (online or in print). Bring a topic to research.

Saturday, Oct. 15  
12:00-1:00 pm

Tuesday, Oct. 25  
5:00-6:00 pm

### Introduction to Patent Searching

An introduction to patent searching. Our patent expert will take you through the process step-by-step, showing how to search the USPTO's Patent Database ([www.uspto.gov](http://www.uspto.gov)) using both print and electronic resources.

Wednesday, Oct. 19  
2:00-4:00 pm

Tuesday, Nov. 15  
12:30-2:30 pm

### EndNote for Engineers

Learn how to download citations from Compendex, Inspec, IEEE Xplore, Web of Science, NTIS, the UW Libraries Catalog, and Ovid databases such as ERIC and PsycINFO, and import them into your own personal EndNote library. This class will be useful to anyone who needs to manage large numbers of citations.

Thursday, Oct. 20  
12:00-1:00 pm

Tuesday, Nov. 8  
12:00-1:00 pm

#### Please note:

If you would like to take any of these classes but cannot attend at the scheduled times, please send an email to [lcwhang@u.washington.edu](mailto:lcwhang@u.washington.edu) and we will try to schedule another session.

### Searching Compendex

Compendex is the most comprehensive index available for journal articles, technical reports, and conference papers on all engineering topics. Attend this half-hour session to get an overview of the database and find out how to set up email alerts and search Inspec and Compendex simultaneously (and de-dupe the results!).

Tuesday, Nov. 1  
12:00-12:30 pm

### Searching IEEE Xplore (IEEE/IEE Electronic Library Online)

IEEE Xplore provides full-text access to IEEE transactions, journals, magazines and conference proceedings published since 1988 and all current IEEE Standards. Attend this session to get an overview of this online library, and find out how to make the most of the time you spend searching.

Wednesday, Nov. 2  
5:00-5:30 pm

### Searching Inspec

Inspec is the most comprehensive index available for journal articles and conference papers in the physical sciences, electrical engineering, and computer science. Attend this half-hour session to get an overview of the database and find out how to set up email alerts and search Inspec and Compendex simultaneously (and de-dupe the results!).

Monday, Oct. 17  
12:00-12:30 pm

Wednesday, Nov. 9  
5:00-5:30 pm

#### Register:

Register by email to [lcwhang@u.washington.edu](mailto:lcwhang@u.washington.edu) listing which class(es) you would like to attend with date(s) and time(s), or by calling 685-8370.

All classes will be held in the Engineering Library Instruction Center (ELIC), on the 3rd floor of the Engineering Library.

Class schedule is available on the web at <http://www.lib.washington.edu/engineering/classes/classes.html>.

**Engineering Library Progress is produced quarterly by Engineering Library staff.**

**Editor: Linda Whang**  
**Contributors: Mel DeSart, Susanne Redalje, Linda Whang**

**Engineering Library Progress is available online at <http://www.lib.washington.edu/engineering/elp/>**

## ENGINEERING DEPARTMENT LIAISONS

**Christina Byrne** [cbyrne@u.washington.edu](mailto:cbyrne@u.washington.edu) 685-8371  
Bioengineering

**Julie Cook** [julesck@u.washington.edu](mailto:julesck@u.washington.edu) 685-8367  
Civil & Environmental Engineering

**Mel DeSart** [desart@u.washington.edu](mailto:desart@u.washington.edu) 685-8369  
Aeronautics & Astronautics ■ Industrial Engineering ■ Mechanical Engineering

**Susanne Redalje** [curie@u.washington.edu](mailto:curie@u.washington.edu) 543-1604  
Materials Science and Engineering

**Linda Whang** [lcwhang@u.washington.edu](mailto:lcwhang@u.washington.edu) 685-8370  
Computer Science and Engineering ■ Electrical Engineering ■ Technical Communication

**Contact the library liaison for your department with purchasing suggestions or for class specific instruction**

## THE OLD CASTLE CONT'D FROM PAGE 1

Many people also requested more **quiet study areas**. While we have no areas anywhere in the building that can be configured for *silent* study, the entire third and fourth floors outside of the group study rooms have been designated for quiet study. Unfortunately, the group study rooms were not in any way soundproofed when they were built, so noise does filter out of them on occasion. However, in an effort to mitigate that, we've changed the signage on the inside of those rooms asking the occupants to please be considerate of others and to keep their noise level to a minimum.

Many of the other requests all had a common theme, albeit perhaps not an obvious one. People asked for more computer workstations, longer hours of opening, engineering software loaded on the machines, more electronic journals, better/newer furniture, new elevators, and a number of other miscellaneous items. Recognize the common theme? Simply put, it's money. We would like to have all of those things as well, but all require additional dollars, dollars that at present are nowhere on the horizon.

As an example of perhaps the least expensive of the items listed above, the staff costs to extend our hours of opening from 10 p.m. to midnight Monday thru Thursday during the fall, winter and spring quarters would be roughly \$6600. Costs for lights, heat, etc. would drive the total cost significantly higher. However, the UW Libraries recognizes the campus demand for increased library access. In an effort to provide that access, the Odegaard Undergraduate Library, which is continuing its past practice of being open 24 hours a day Sunday through Thursday, will now also be open later (until 9:00 p.m.) on Fridays and Saturdays.

Engineering Library staff will continue to work to improve our collections, services and facilities as funding allows. We ask for your patience and your input as we endeavor to make your time in "the old castle" positive and productive.

Mel DeSart  
Head, Engineering Library  
[desart@u.washington.edu](mailto:desart@u.washington.edu)

## SAFARI TECH BOOKS SURVEY



Do you use the UW Libraries' Safari Tech Books Online collection? If so, we want to hear what you think about it and what books you'd like to see available on it!



Safari Tech Books Online is a collection of full-text, online computer manuals by publishers such as O'Reilly, Addison-Wesley, Prentice Hall, New Riders, Sams, Que, and more. Books are available 24/7 from any computer with an Internet connection (you must be logged into the Libraries' proxy server if you are off-campus, however).



Since we have the ability to tailor this collection to your needs, we'd like some feedback on what types of books you'd like to see on Safari. More programming books? More books on graphics or desktop publishing? How about database design or human-computer interaction? Tell us what you think!

Please fill out our survey located at <http://tinyurl.com/93e4w> until the end of October. Safari Tech Books Online is available on the Engineering Libraries' databases page at <http://www.lib.washington.edu/engineering/guides/englibdb.html>.