

Music Library Association

Pacific Northwest Chapter

Newsletter

Volume XXI

Fall 2002

WORDS FROM THE CHAIR

Dear friends and colleagues,

Our newsletter has traditionally been a celebration of our chapter, and this one will probably be no exception. In its pages are noted not only our professional achievements and successes but also the individual stories that attest to the good will and friendship among our members. When I consider the national activities of so many of us, I'm tempted to speculate that, given our small membership, the Pacific Northwest Chapter might make an unusually large percentage of professional contributions at the national level, with committee chairs, board membership and program presentations to our credit. Whether my speculation is true or not, I always feel a swell of pride when I learn of one of our members' successes.

Closer to home, too, each of us is busy daily in the pursuit of our calling, providing information on music to our users: choosing materials, organizing them, making difficult and judicious decisions about which resources will best serve our clientele. Some of us are involved in planning new spaces, others coping with sadly inadequate ones. Reorganization seems to be a principal preoccupation at many institutions and we're called upon to (continually) weather organizational change.

As we all know, music is the glue that binds us together in our work, and I can't emphasize enough the value of our chapter and national affiliations. We know how specialized our work is, and though we may be relatively isolated in what we do on a daily basis, the support that we enjoy as colleagues and friends is what we celebrate here. So I invite readers who enjoy these pages to reflect on the strength of our numbers, and the strengths of our members.

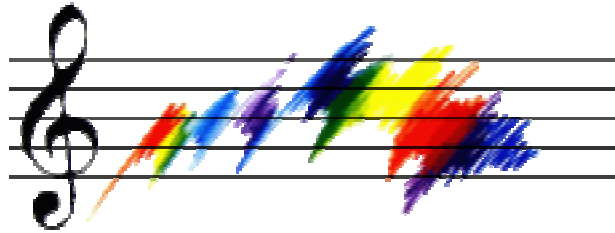
In considering our strengths, let's begin to think about how might function even better as a chapter. What new Chapter project might be feasible and worthy of an MLA Chapter Grant? How can we best get to know our neighbors in the California Chapters? Are there collection-building collaborations that we could explore, or innovative ways of sharing what we have?

In addition to the immediate local and national activity that keeps us all busy, our chapter begins to prepare for 2005's national MLA conference in Vancouver, BC. Every MLAer that I talk to about the venue seems excited about coming to the Pacific Northwest. It's a time that we can proudly show off our region to our colleagues from everywhere, and it's not too soon for each chapter member to think of some way to participate in local arrangements, even if they're more long-distance than local!

Our chapter meeting in spring 2003 in Bellingham, WA brings us closer to that Vancouver setting both in time and distance, and I'm looking forward to hearing an update on plans. Our Chapter Vice-President/President-Elect Carolyn Shandler is this year's chapter program chair. If you have something you'd like to present, or would like to see presented, we'll be planning the spring program soon.

Thanks to Terry Horner for putting together another issue of the Newsletter. And thanks to everyone in the Chapter for continued commitment to music librarianship wherever we happen to practice the profession. We do good.

---Paula Elliot



FROM THE EDITOR

Another year has passed by so quickly! Once again I am glad to bring you news of the chapter.

Kirsten Walsh and I are continuing plans for the 2005 MLA conference here in Vancouver by beginning to set up a local arrangements committee. We have an enthusiastic group of people willing to lend a hand at many levels. We are also glad that our Canadian counterpart, CAML, has been invited to attend this conference (see letter below)

Terry Horner

MLA Invites CAML to 2005 MLA Conference in Vancouver, BC

E-mail from Jim Cassaro to Carolyn Shandler:

Hello Carolyn,

I have just faxed off to Brenda [Muir] an invitation to her and to all CAML members to join us at MLA 2005 in Vancouver. We will extend the MLA member registration fee (much lower than the non-member fee) to all CAML members who are not already MLA members as an added incentive to attend this meeting.

Many thanks for asking about this.

Jim Cassaro
MLA President

TREASURER'S REPORT
October 29, 2002

Compiled by: Beverly B. Stafford, Secretary/Treasurer

Account balance from Oct. 31, 2001:	\$2185.56
<u>Expenses, 2001-2002:</u>	
Fall Newsletter:	\$123.07
Mailers for Spring Meeting:	61.18
Spring Meeting:	
Refreshments and Dinner Friday 3 rd - Saturday 4 th :	443.26
Speaker (Patchen Haggerty)	100.00
<i>Total for meeting:</i>	<i>(543.26)</i>
Repayment to Hollis Near (for prior year expense)	24.01
Total Expenses 2001/2002:	\$751.52
<u>Revenue, 2001-2002:</u>	
Memberships:	\$270.00
Meeting Registrations:	407.25
Total Revenue:	\$677.25
Current Balance as of Oct. 25, 2002:	\$2111.29



PACIFIC NORTHWEST CHAPTER NEWS



Portland 2002

On the first weekend of May, 2002, PNW Chapter members gathered in Portland, Oregon, for their annual meeting, this year hosted by Beverly Stafford and Betty Woerner.

Friday afternoon's sessions were held at the splendidly renovated Multnomah County Public Library in downtown Portland. Members enjoyed presentations by John Brower on collecting music theatre resources, Marian Ritter on Friends of the Music Library and Laurel Sercombe on collecting Pacific Northwest Coast Indian music. Attendees then were treated to a royal tour of the beautiful facilities culminating in Special Collections where they viewed some fascinating treasures.

The evening was spent at the home of Betty Woerner, where excellent conversation was rivaled only by the excellent catering.

On Saturday morning the group convened on the campus of Reed College, where musicologist Virginia Hancock discussed pre-publication performances and Brahms' revisions of the *Fest- und Gedenksprache*, op. 109 and Portland attorney Patchen Haggerty conducted a very useful session on music and copyright. The morning concluded with the annual business meeting.

---Paula Elliot

MINUTES
PNWMLA BUSINESS MEETING
Portland, Oregon
May 4, 2002

Chair: Paula Elliot

Secretary-Treasurer: Beverly B. Stafford

Location: Elliot Hall, Reed College

Minutes from 2001: The minutes were accepted with minor spelling/date changes.

Treasurer s Report: accepted.

Election Results for President of the Chapter:

Paula announced that Carolyn Shandler won the spring election for President of the Chapter. She thanked John Brower for running for office, Kirsten Walsh and Monica Fazekas for serving as Chapter Presidents. Paula will serve as Chapter President for this year, and will be followed by Carolyn Shandler, beginning 2004.

Proposal for joint meeting with the Northern California Chapter:

Paula reported on correspondence with members of the Northern California Chapter of the Music Library Association, who have suggested that we combine our annual meetings. Expected number of members from Northern California is approximately 20. Discussion followed about a location for this meeting and potential dates.

Outcome: Betty Woerner suggested that we propose Eugene as a meeting place for next year s annual meeting, for both chapters, with a date to be determined. A motion was called and seconded that we invite the Northern California Chapter to join us for an annual meeting, May 2nd/3rd, 2003. It was agreed that Bellingham would be a second meeting location if we do not meet as a group with Northern California MLA members.

Planning: Paula will be responsible for the program.

Opportunities available from the MLA:

Best of Chapters Proposal. Paula discussed last year s submission of Beverly Stafford s presentation titled Portland Music remembered 1900-1923, and recommended to the Chapter that we resubmit it this year. She called for a motion from the members present; this was seconded and approved. Laurel Sercombe s presentation at this year s chapter meeting was also discussed as a paper that represents the traditional music of the Pacific Northwest. It was suggested that Laurel s work be submitted for the Best of Chapters competition for the 2005 conference in Vancouver.

Outcome: Beverly Stafford submitted the paper, and it has been selected for presentation at the MLA conference in Austin in February 2003.

Chapter Projects:

Paula asked for new projects that the Chapter could initiate, since the Treasury has funds available, and since grant funds are available through the MLA national organization. Discussion followed: John Brower suggested brochures to send out to Pacific NW libraries. Another possibility would be to use Chapter funds to convert collections to a digital music site. Others felt that Chapter funds should be saved for the 2005 conference.

Outcome: The consensus seemed to be that to save for the 2005 conference would be preferable

initiating new projects at this time.

New member grants to attend MLA in Austin, February 2003:

Paula welcomed Jon Haupt, music library student at the University of Washington, to apply for funds to attend the Austin meeting. Grants are available for this purpose.

PNW Chapter Directory Project:

Cathy Gerhart gave a short history of the directory, that is available online at the MLA PNW Chapter website. She collected statistics that showed for the year 2001, there were 4643 access points to different entries in the directory, 1810 visits to the site. For the first quarter of January-March, 2002, there were 885 visits to the site, 1168 access points. The directory has not been updated for several years, and is not copyrighted.

Outcome: Cathy offered to do another edition of the directory; using records received by the Chapter secretary to verify current address information. The new edition can be copyrighted as the 3rd edition; it was suggested we add photographs/illustrations to the new edition. Paula will write an introduction; we also need a statement of responsibility of authorship; Paula will send the introduction to Cathy for her to include in the directory. Cathy offered to oversee the directory project for 5 years, until 2007.

MLA PNW Chapter Web site:

Paula thanked John Gibbs for maintaining the web site. Discussion followed about how to eliminate junk mail from the listserv.

Outcome: Laurel Sercombe will serve as a joint owner of the listserv. A new moderated list will be formed that will be managed by John and Laurel to keep chapter correspondence limited to members. As of May, 2002, there are 31 subscribers to the listserv.

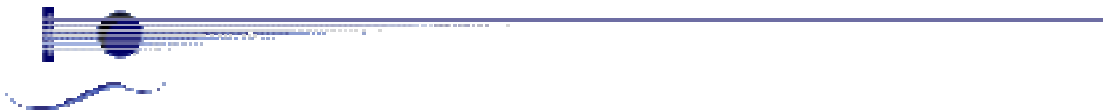
Planning for Vancouver MLA 2005

Kirsten: After touring hotel options in Vancouver BC with Gordon Rowley and Don Roberts, the Hotel Vancouver was selected as the site for the MLA National Conference in 2005. Terry and Kirsten are beginning the planning process for the Local Arrangements Committee; this work will be shared among all members in the chapter. Patricia Stroh, from the Beethoven Center in San Jose will be the Program Chair for the 2005 conference. Annie Thompson will be the assistant conference manager. Carolyn Shandler will be president of the PNW Chapter in 2005 during the time of the annual MLA conference. There was discussion about the Canadian Music Library Association; members expressed an interest in the idea of inviting this group to the MLA Vancouver 2005 conference.

PNW MLA Nominating Committee

Paula requested volunteers for a new Nominating Committee for the coming year. John Brower volunteered and will be the Chair of the Nominating Committee.

The meeting was adjourned at 1:00 PM



Call for nominations

John Brower has agreed to chair the Nominations Committee this year. The Vice Chair/Chair elect position will have to be filled. Please send names of nominees to John by February 1, 2003.

Dates and location for the annual meeting

The 2003 Annual Meeting of the Pacific Northwest Chapter of the Music Library Association will be held April 25-26 or May 2-3, 2003 in Bellingham, WA. Please send any ideas about programming, or papers you would like to see presented to Carolyn Shandler.

Carolyn Shandler
Public Services Librarian,
Guildford Branch, Surrey Public Library
604 588-5015 (316)
604 588-5627
CASHandler@city.surrey.bc.ca
www.spl.surrey.bc.ca



NEWS FROM THE MEMBERSHIP

Judy Tsou

Judy Tsou has been elected to the Council of the American Musicological Society. Her 3-year term begins after the fall 2002 meeting in Columbus.

Catherine Gerhart

My work life improved substantially in August when my unit was moved back to campus after a year and a half stint 5 miles away at the Sand Point. I moved back to a different place in Suzzallo Library. I'm now on the second floor in the 1935 wing of the building. We've been having wonderful parties to celebrate the reopening of Suzzallo as well as the 75th anniversary of its opening. The official party with all the important dignitaries will be Nov. 14th from 2:00-5:00. Also, as part of the festivities we will be having a concert in the Graduate Reading on Dec. 7. The Medieval Women's Choir will be performing. It is a free concert, but tickets must be requested in advance. If you're interested e-mail or call me and I'll get you the details.

My other big news was I was elected Vice President/President Elect of the Online Audiovisual Catalogers, Inc. (OLAC). This group is comprised of about 500 catalogers of non-book materials. We do most of our business at ALA with a biennial meeting. This year in Oct. we met in St. Paul, Minn. Two years ago, you may remember, the OLAC meeting was here in Seattle.

At home, the boys continue to grow. Julian is now driving so stay off the roads. He's a Junior in high school. Other than lots of studying he is an avid practitioner of Aikido (a Japanese martial art). Colin continues to play the trumpet and attended the Burton Music Camp on Vashon Island during the summer. He auditioned for a place in one of the Youth Symphonies and managed to get a spot even though he said he did terribly. So there goes my Saturdays!

Ned has managed to hold on to his job while many around him have been laid off. He has recently informed me that the company he works for (Attachmate) is doing better now that they have trimmed a lot of fat.

Terry Horner

I am happy to announce that I have been granted a sabbatical from Jan.-Dec. 2003. I will be spending my time working on the British Columbia sheet music project that has expanded to include a local and social history of British Columbia through the sheet music I have located. Through the course of this project thus far, I have located several more collections of sheet music and will also interview many composers and musicians who have been a part of the British Columbia music scene.

Most of my study travel will be spent in British Columbia in various towns and cities on the mainland and Vancouver Island. Next summer I will continue research in Ottawa and Toronto, Ont. While back east, I plan to attend a couple of conferences and a university and high school reunion in Fredericton, NB and in my home town of

Port Hope, Ont. I have recently made contact with a few friends I haven't seen in 25 or so years I hope to see next summer.

With regard to travel lately this year I have stayed pretty close to home. I have enjoyed spending time travelling to the Island with visits to Cortez Island hiking and wild mushroom picking, and visits to Portland.

Hollis Near

Cornish College of the Arts is moving! During summer 2003 the college is scheduled to move from its Capitol Hill location to the Lenora Square Building at Denny & Lenora in downtown Seattle. Details can be found at our home page, www.cornish.edu, under "News" then "Campus Relocation".

The school will retain the original 1921 Kerry Building, where the Music and Dance Departments are currently located. Music and Dance are to remain in Kerry for the next couple of years (?) until additional real estate acquisitions and remodels make room for their programs at the new site. The listening center will remain near the Music Department until they move.

In February we received a gift of nearly 350 20th century scores ('50's through '80's) from the working collection of Seattle composer and conductor Joan Franks Williams. Ms. Williams, a former student of Ralph Shapey and Stefan Wolpe, came to Seattle in 1962 and founded New Dimensions in Music, a non-profit organization dedicated to the performance of contemporary music. For ten years the group mounted several concerts each season and paved the way for new music concerts in Seattle. Williams continued to organize and conduct new music concerts during a 16-year residence in Israel and returned to Seattle in 1988. Ms. Williams' interest in experimental notation is reflected in her score collection. Her personal papers and scores, along with material related to New Dimensions in Music, went to the University of Washington, Manuscripts, Special Collections, University Archives.

Beverly Stafford

Thank you so much for sponsoring my paper to the Music Library Association Best of Chapters competition this year. They selected the paper for presentation in Austin at the MLA conference, along with Rick McRae from the University of Buffalo Library. Thank you also to everyone who came to Portland for the spring meeting in early May this year. Betty and I enjoyed hosting the Chapter.

Here at Multnomah County Library this fall we are cosponsoring a lecture series with the Oregon Symphony. There are six lectures in the series, given by musicians and administrators from the Symphony. We just finished the first one, with a

lecture by Tim Scott, a cellist, whose lecture was about the Baroque era. For each lecture, I am preparing booklists (<http://www.multcolib.org/guides/fortissimo/index.html>) and setting out displays of books and CDs for a library tour after the lecture. The Saturday after the lecture, Tim Scott was back to do a library concert of viol music for the Saturday concert series we have here.

For my dance group I have a horse costume, and this year I have been bringing the horse to the Library for special events, and playing the flute in the Children's Section, when it works out. This is fun, and the younger children seem to enjoy it especially. I played last year at tax preparation time, and a woman came up to me later to say that the flute playing made the tax troubles go more easily for her, a marvelous compliment. She was sitting off in another room working on her taxes, but the flute carried in. On May Day this year my garland dance team was one of 4 dance groups that performed in the Library, along with 2 Morris sides, plus a long sword team

Over the summer, a Whitman music student, Marcus Lindbloom, was here working on a number of music projects while home from school. He is interested in applying to graduate school for music librarianship when he completes his undergraduate work. I am hoping he will be joining us in Vancouver for MLA 2005.

I still see Barbara Rhyne on Sundays when she comes in to the Library as a volunteer to index songs in our collections, in between trips to visit her grandchildren and other vacations. Indexing of songs goes into our online catalog as a contents search, rather than forming a separate database. At this point most of the collection is indexed, for songbooks with up to 100 song titles in the tables of contents

Hope you all are well and thank you again for recommending my paper for the Best of Chapters competition this year. It is an honor to represent the PNW Chapter at the MLA conference.

Laurel Sercombe

At the invitation of Judy Tsou, I presented a paper at the annual conference of the International Association of Music Librarians (IAML), held in Berkeley in early August. The paper, titled "Researching the Music of the First People of the Pacific Northwest: From the Academy to the Brain Room," benefited greatly from its "premiere" at our spring chapter meeting - thanks to all for your comments!

In October I attended the annual meeting of the Society for Ethnomusicology, located this year at 8100 feet, in Estes Park, Colorado. Duties as

treasurer and the effects of the altitude did not diminish my appreciation of the setting or lessen the energy boost that comes from schmoozing with one's colleagues. The involvement of music and musicians in the current climate of xenophobia and international tension was driven home often in paper sessions and conversation. The SEM board has taken the step (as has the American Folklore Society) of sending a letter to U.S. Secretary of State Colin Powell objecting to the recent implementation of restrictive policies that prevent musicians and dancers from visiting the U.S. and emphasizing the need for international cultural and artistic exchange to continue, now more than ever.

Much of my time the next few months will be spent helping to organize a series of events to commemorate the 40th Anniversary of Ethnomusicology at the University of Washington. During the weekend of April 25-27, 2003 we'll host concerts, a reunion of alumni, and a symposium, "Music in the Making, Music in the Mind: the Next Forty Years of Ethnomusicology at the University of Washington."

Kirsten Walsh

Our Stravinsky celebration in April was a great success. My only regret was that we couldn't leave the collection exhibit up for longer than a weekend, so that more people could see it. However, our website (<http://www.library.ubc.ca/slim/>) includes images of nearly every item, so you can still get an idea of what treasures there are.

We received new shelving with locking glass doors for our Seminar Room last summer, so our rare books are better protected. Our building was recently connected to the campus wireless network, and laptops with wireless cards are becoming more common among students and faculty. I'm still overseeing the Fine Arts Division; 18 months got stretched into a 3-year term.

The IAML conference in Berkeley was a highlight of this summer. It was fun to see so many PNW Chapter members there along with the international crowd, plus a good number of Canadians.

I've joined the ranks of the empty nesters, alas. Both of my girls spent the summer touring Ontario, Japan and Hong Kong with the National Youth Orchestra of Canada. Now Karin, my younger one, is studying oboe at the New England Conservatory and Eileen is living on the UBC campus in her last year. The house feels empty, but I've had time to organize a new roof and have a couple of skylights installed. The additional light is wonderful.

Sheila Knutson

A high point of the year for me was attending IAML in Berkeley and presenting a slide-illustrated talk on "Collections and Services in

Transition" during a public libraries segment. It was a pleasure to attend Laurel Sercombe's presentation and to see several members of our chapter.

Outside of work I have continued as organist and pianist at a local church. A recent discovery is that one of my favorite organ music composers (J. G. Walther) was a cousin of Bach. His organ works without pedal can be very effective on piano. A small choir directed from the keyboard has been a recent, added responsibility -- quite time consuming, but enjoyable.

John Brower

This has been a year of transition here at Seattle Public Library. We are still in the Temporary Central Library (800 Pike St.). We are in about half of the space we had in the old library, so we had to put half of the collection in storage. As you might guess we spend much time retrieving materials from closed stacks or storage.

One of the experiments that we are trying is a General Reference model. The idea is that generalists/specialists will be at a one-stop reference desk where simple questions can be answered. The more difficult questions would then be sent to the departments. I was asked to go as the Art, Music, Literature, and Recreation specialist. About half of my time has been in General Reference, the rest in Arts, Recreation and Literature. It is a good idea, but the way it is working in the temporary library is that most people pass by the General Reference desk and go up the elevator to the subject departments. One of the changes we are making is that General Reference is moving to the third floor where all of the non-fiction collection is housed. This should help to make General Reference live up to its name. The good news is that I will be returning to Arts, Recreation and Literature almost full time! (In other words, I get to be a music librarian all the time again!)

Budget woes have hit Seattle pretty fully. Seattle Public Library closed the entire system for two weeks in 2002 (August, and coming up in December). This was an actual lay-off, since we were not paid for those two weeks. Next year looks even worse. We will be reducing hours, and closing for another two weeks (hopefully when the central library is moving from temporary quarters to the new library). We are stuck trying to find creative ways to make ends meet. (I suggested I could go down to Pike Place Market with my djembe (African drum) and put up a sign "Librarian out of work, three teens to feed". If I do it I'll get a picture for you all.)

The new building is scheduled to open November 2003. If you go to our web site www.spl.org you can see an animation of the sequence for the steel to go up on the Rem Koolhaas designed building. I am most excited about the practice rooms which will have pianos, and be mostly sound proof, so patrons

can sing with the piano or bring another instrument and play it, but not bother people outside the practice room. We also have an area for a small ensemble to play, not to mention an auditorium. I am really looking forward to getting into the new building. Maybe I can show it off at an upcoming chapter meeting after we open.

In MLA news, I'm looking forward to the convention in Austin. The Musical Theatre Roundtable will have a presentation about Annie Get Your Gun. The MLA Jazz Band is starting to get the charts dusted off and I am planning on giving our own Chapter Chair an opportunity to sing a real torch song! (Get ready Paula!) I am also on the Statistics Sub-Committee and we will soon have the latest version of the survey ready for you all to fill out. Keep tuned to the PNWMLA listserv for further details.

See you in Austin!

Cynthia Richardson

When does attending a meeting seem more like being on vacation? When it's a IAML meeting in Berkeley! I had the great pleasure of experiencing a IAML meeting for the first time this summer, and if it was at all representative, I hope that it won't be my last time for IAML. By MLA standards the pace was positively leisurely, and the opportunity to learn about how music librarianship is practiced in other countries lends a whole new perspective to what we do. I was pleased to discover that a number of attendees were from public libraries, and catalogers were also not as scarce as I had anticipated. I was fortunate in sharing the good company of quite a few other chapter members. Laurel Sercombe and Sheila Knutsen deserve special commendation for the excellent presentations they contributed.

At King County Library System, a vote to be taken soon will determine whether we will gain union representation for something over 500 employees (that's roughly half). For most of the past year I have been among the most active in union organizing, so the outcome is of both personal and professional interest.

Paula Elliot

In August my husband Paul and I began a year's sabbatical. We spent the first six weeks away from Pullman traveling, first in the Canadian Rockies and the coast of British Columbia, then in Turkey, which we found fascinating in many respects for its fascinating culture, historical artifacts, beautiful coastline and fabulous cuisine.

Now I'm starting work on my projects with an anticipated publication for MLA, an updating of its technical report "Careers in Music Librarianship." I'm also looking at an unplumbed collection of musicians' autograph letters in my own library's Special Collections Division and keeping my eyes open for other music-related opportunities.

We plan to do some more traveling, but in the meantime I'm enjoying Not Going to Work in the usual sense. My library, like many, is undergoing reorganization, and as a result my job as Head of Humanities Collections was done away with. I anticipate returning to some new responsibilities, and I expect to be able to devote more of my attention to music collections.

Jon Haupt

I have greatly enjoyed my first year in the UW MLIS program. Highlights for the year include attending PNWMLA last May and IAML this summer. I have been involved in two very different internships, one at Smithsonian Global Sound with Susan Golden and one at the UW Music Library, a reference and instruction internship supervised by Deborah Pierce. I've also been re-editing the article I'm writing for the new MGG on Sir Hamilton Harty (my MM thesis topic). This year, I'll be graduating in June, and looking around for academic music library jobs, and plan to attend MLA and PNWMLA once again.

Barbara Rhyne

It was such a pleasure to see so many of you here in Portland in May. I'm not sure about getting to Bellingham, and my new laptop was crashing all over the place; so I didn't get to read the recent list exchange about it, but I have it in mind. Meanwhile, Charles and I are both well and busy in true retirement fashion--he's in his office every day, and I continue to sing at church and at Reed and to plug away once a week at entering contents notes into the MCL catalog. I've been doing Christmas books seemingly forever. Every quarter of an inch thick collection manages to have at least 50 carols in it! Slow and thorough has always been my m.o.

Pacific Northwest Chapter Music Library Association

Membership Renewal Form

May 2002 to May 2003

Name: _____

Address: (please check the box you prefer for MLA mailings)

Library/Business Address:

_____ Dept.
_____ Library/Business Name
_____ Street Address/PO Box #
_____ City, State/Province
_____ Zip/Postal Code Country
_____ Work Phone
_____ Work Fax No.
_____ Email Address
_____ Web Site (dept/music related)

Home Address:

_____ Street Address
_____ City, State/Province
_____ Zip/Postal Code Country
_____ Home Phone/Fax

Membership Dues: \$10.00 US funds per year (a receipt will be sent)

Please mail to:

Beverly B. Stafford
Secretary/Treasurer
MLA PNW Chapter
9331 SW 20th Place
Portland, OR 97219 USA

**For questions about MLA membership, send a note to me at the address above,
email: stafford@multcolib.org**

Or phone: work: (503) 988-5728 home: (503) 246-6100

*****Thank you for your support of the PNW Chapter of the Music Library Assoc.*****

MUSIC LIBRARY ASSOCIATION

MEMBERSHIP APPLICATION

The Music Library Association
c/o A-R Editions, Inc.
8551 Research Way, Suite 180
Middleton, WI 53562

Please Mark Your Membership Category:

- Corporate Patron \$ 500
Corporate Member \$ 300
Sustaining Member \$ 150
Individual Member \$ 75
Institutional Member \$ 90
Associate Member (same household) \$ 55
Student Member \$ 35
Retired Member \$ 45

Subscription to Notes for Non-Members:

- Individual \$ 70
Institutional \$ 80

Membership dues \$ _____

Postage (Postage for members and subscribers outside the U.S. is \$10) \$ _____

Notes subscription only \$ _____

Placement Service and Job List (\$15) \$ _____

TOTAL \$ _____

I am paying by credit card (please fill out the information below):

Please check one: VISA MASTERCARD

Card Number: Exp. Date:

Signature:

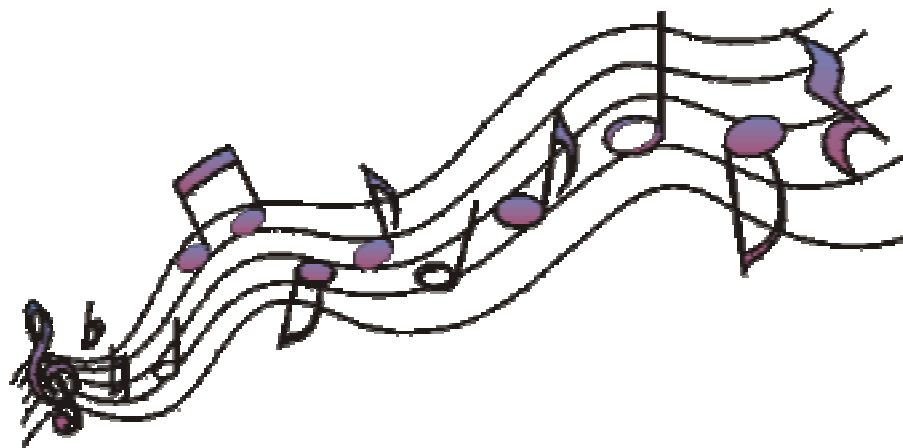
My check or money order is enclosed.

Checks must be in US dollars and drawn on US Funds.

NAME: _____

ADDRESS: _____

Please send me information about my regional MLA chapter



The Newsletter of the Pacific Northwest Chapter of the Music Library Association is published annually in the fall. Send contributions for inclusion in the Newsletter to: Terry Horner, UBC, Music Library, Music Building, 6361 Memorial Road, Vancouver, BC, Canada, V6T 1Z2. E-mail: thorner@interchange.ubc.ca, Fax: 604-822-1966